

## Anti-KCNJ11/KATP/ antibody (Internal) (STJ71166)

### GENERAL INFORMATION

Product Type	Primary antibodies
Applications	Pep-ELISA/WB/IHC
Host / Source	Goat
Reactivity	Human

### PRODUCT PROPERTIES

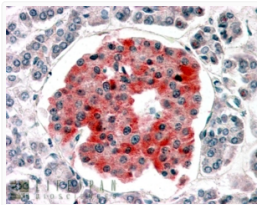
Clonality	Polyclonal
Concentration	0.5 mg/mL
Conjugation	Unconjugated
Purification	Purified from goat serum by ammonium sulphate precipitation followed by antigen affinity chromatography using the immunizing peptide.
Dilution Range	Peptide ELISA: antibody detection limit dilution 1:32000. WB: Approx 45-48kDa band observed in Human Skeletal Muscle lysates (calculated MW of 43.5kDa according to NP_000516.3). Recommended concentration: 0.1-0.3µg/ml. IHC: In paraffin embedd
Formulation	0.5 mg/ml in Tris saline, 0.02% sodium azide, pH7.3 with 0.5% bovine serum albumin. NA
Isotype	IgG
Storage Instruction	Store at -20°C on receipt and minimise freeze-thaw cycles.

### TARGET INFORMATION

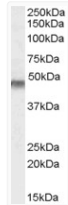
Gene ID	<a href="#">3767</a>
Gene Symbol	<a href="#">KCNJ11</a>
UniProt ID	<a href="#">KQJ11_HUMAN</a>
Immunogen Region	Internal
Immunogen Sequence	AEDPAKPRYRARQ
Specificity	This antibody is expected to recognise isoform 1 (NP_000516.3) only.

### ADDITIONAL INFORMATION

Note STRICTLY FOR FURTHER SCIENTIFIC RESEARCH USE ONLY (RUO). MUST NOT TO BE USED IN DIAGNOSTIC OR THERAPEUTIC APPLICATIONS.



STJ71166 (3.8 µg/ml) staining of paraffin embedded Human Pancreas. Steamed antigen retrieval with citrate buffer pH 6, AP-staining.



STJ71166 (0.1 µg/ml) staining of Human Muscle lysate (35 µg protein in RIPA buffer). Primary incubation was 1 hour. Detected by chemiluminescence.