

Anti-PSME1-Isoform 1 antibody (C-Term) (STJ71163)

GENERAL INFORMATION

| | |
|---------------|---------------------|
| Product Type | Primary antibodies |
| Applications | Pep-ELISA/WB |
| Host / Source | Goat |
| Reactivity | Human/Mouse/Rat/Dog |

PRODUCT PROPERTIES

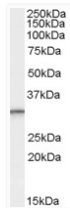
| | |
|---------------------|--|
| Clonality | Polyclonal |
| Concentration | 0.5 mg/mL |
| Conjugation | Unconjugated |
| Purification | Purified from goat serum by ammonium sulphate precipitation followed by antigen affinity chromatography using the immunizing peptide. |
| Dilution Range | Peptide ELISA: antibody detection limit dilution 1:64000. WB: Approx 30kDa band observed in Human Lymph Node, Spleen, Tonsil and Peripheral Blood Mononucleocyte lysates (calculated MW of 28.7kDa according to NP_006254.1). Recommended concentration |
| Formulation | 0.5 mg/ml in Tris saline, 0.02% sodium azide, pH7.3 with 0.5% bovine serum albumin. NA |
| Isotype | IgG |
| Storage Instruction | Store at -20°C on receipt and minimise freeze-thaw cycles. |

TARGET INFORMATION

| | |
|--------------------|---|
| Gene ID | 5720 |
| Gene Symbol | PSME1 |
| UniProt ID | PSME1_HUMAN |
| Immunogen Region | C-Term |
| Immunogen Sequence | KNFEKLLKPRGETK |
| Specificity | This antibody is expected to recognise isoform 1 (NP_006254.1). |

ADDITIONAL INFORMATION

Note STRICTLY FOR FURTHER SCIENTIFIC RESEARCH USE ONLY (RUO). MUST NOT TO BE USED IN DIAGNOSTIC OR THERAPEUTIC APPLICATIONS.



STJ71163 (0.3 µg/ml) staining of Human Peripheral Blood Mononucleocyte lysate (35 µg protein in RIPA buffer). Primary incubation was 1 hour. Detected by chemiluminescence.