

## Anti-CLIC4 antibody (N-Term) (STJ71151)

### GENERAL INFORMATION

Product Type	Primary antibodies
Applications	Pep-ELISA/WB/IHC/IF
Host / Source	Goat
Reactivity	Human/Mouse/Rat/Dog

### PRODUCT PROPERTIES

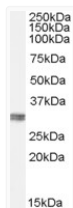
Clonality	Polyclonal
Concentration	0.5 mg/mL
Conjugation	Unconjugated
Purification	Purified from goat serum by ammonium sulphate precipitation followed by antigen affinity chromatography using the immunizing peptide.
Dilution Range	Peptide ELISA: antibody detection limit dilution 1:64000. WB: Approx 30kDa band observed in Human Kidney and Placenta lysates (calculated MW of 28.8kDa according to NP_039234.1). The observed molecular weight corresponds to earlier findings in li
Formulation	0.5 mg/ml in Tris saline, 0.02% sodium azide, pH7.3 with 0.5% bovine serum albumin. NA
Isotype	IgG
Storage Instruction	Store at -20°C on receipt and minimise freeze-thaw cycles.

### TARGET INFORMATION

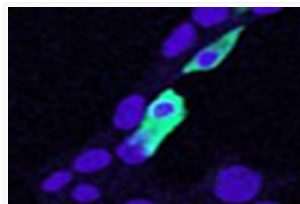
Gene ID	<a href="#">25932</a>
Gene Symbol	<a href="#">CLIC4</a>
UniProt ID	<a href="#">CLIC4_HUMAN</a>
Immunogen Region	N-Term
Immunogen Sequence	NGLKEEDKEPLIE

### ADDITIONAL INFORMATION

Note STRICTLY FOR FURTHER SCIENTIFIC RESEARCH USE ONLY (RUO). MUST NOT TO BE USED IN DIAGNOSTIC OR THERAPEUTIC APPLICATIONS.



STJ71151 (0.1 µg/ml) staining of Human Kidney lysate (35 µg protein in RIPA buffer). Primary incubation was 1 hour. Detected by chemiluminescence.



STJ71151 (5 µg/ml) staining of min6 cells transiently expressing mouse Clc4. Nuclear counter staining by Hoechst. Data kindly provided by Dr. Virginie Nepote, Lausanne University, Switzerland.