

## Anti-STS2/TULA antibody (Internal) (STJ71083)

### GENERAL INFORMATION

Product Type	Primary antibodies
Applications	Pep-ELISA/IHC
Host / Source	Goat
Reactivity	Human/Dog

### PRODUCT PROPERTIES

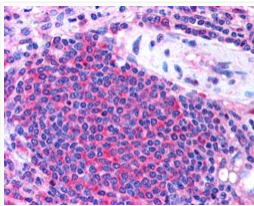
Clonality	Polyclonal
Concentration	0.5 mg/mL
Conjugation	Unconjugated
Purification	Purified from goat serum by ammonium sulphate precipitation followed by antigen affinity chromatography using the immunizing peptide.
Dilution Range	Peptide ELISA: antibody detection limit dilution 1:64000. WB: Preliminary experiments gave an approx 48kDa band in lysates of B-cell line Daudi after 0.1µg/ml antibody staining. Please note that currently we cannot find an explanation in the literature
Formulation	0.5 mg/ml in Tris saline, 0.02% sodium azide, pH7.3 with 0.5% bovine serum albumin. NA
Isotype	IgG
Storage Instruction	Store at -20°C on receipt and minimise freeze-thaw cycles.

### TARGET INFORMATION

Gene ID	<a href="#">53347</a>
Gene Symbol	<a href="#">UBASH3A</a>
UniProt ID	<a href="#">UBS3A_HUMAN</a>
Immunogen Region	Internal
Immunogen Sequence	QQCSTPDGKYRDP
Specificity	This antibody is expected to recognize both reported isoforms (NP_061834.1 and NP_001001895.1).

### ADDITIONAL INFORMATION

Note STRICTLY FOR FURTHER SCIENTIFIC RESEARCH USE ONLY (RUO). MUST NOT TO BE USED IN DIAGNOSTIC OR THERAPEUTIC APPLICATIONS.



STJ71083 (2.5 µg/ml) staining of paraffin embedded Human Spleen. Steamed antigen retrieval with citrate buffer pH 6, AP-staining.