

## Anti-GALR1 antibody (Internal) (STJ71064)

### GENERAL INFORMATION

|               |                         |
|---------------|-------------------------|
| Product Type  | Primary antibodies      |
| Applications  | Pep-ELISA/WB            |
| Host / Source | Goat                    |
| Reactivity    | Human/Mouse/Rat/Dog/Cow |

### PRODUCT PROPERTIES

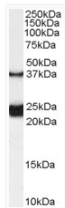
|                     |  |
|---------------------|--|
| Clonality           | Polyclonal   |
| Concentration       | 0.5 mg/mL  |
| Conjugation         | Unconjugated   |
| Purification        | Purified from goat serum by ammonium sulphate precipitation followed by antigen affinity chromatography using the immunizing peptide.  |
| Dilution Range      | Peptide ELISA: antibody detection limit dilution 1:128000.<br>WB: Approx 24-25kDa and 37kDa bands observed in lysates of Rat Spinal Cord (calculated MW of 24.9kDa according to Rat NP_037090.1 and calculated MW of 38.9kDa according to AAC52438.1 and |
| Formulation         | 0.5 mg/ml in Tris saline, 0.02% sodium azide, pH7.3 with 0.5% bovine serum albumin. NA   |
| Isotype             | IgG  |
| Storage Instruction | Store at -20°C on receipt and minimise freeze-thaw cycles.   |

### TARGET INFORMATION

|                    |                             |
|--------------------|-----------------------------|
| Gene ID            | <a href="#">2587</a>        |
| Gene Symbol        | <a href="#">GALR1</a>       |
| UniProt ID         | <a href="#">GALR1_HUMAN</a> |
| Immunogen Region   | Internal                    |
| Immunogen Sequence | RSKPGKPRSTTN                |

### ADDITIONAL INFORMATION

Note STRICTLY FOR FURTHER SCIENTIFIC RESEARCH USE ONLY (RUO). MUST NOT TO BE USED IN DIAGNOSTIC OR THERAPEUTIC APPLICATIONS.



STJ71064 (0.1 µg/ml) staining of Rat Spinal Cord lysate (35 µg protein in RIPA buffer). Primary incubation was 1 hour. Detected by chemiluminescence.