

Anti-FEZ1/Zygin 1 antibody (Internal) (STJ71041)

GENERAL INFORMATION

Product Type	Primary antibodies
Applications	Pep-ELISA/WB/IHC
Host / Source	Goat
Reactivity	Human/Mouse/Rat/Dog

PRODUCT PROPERTIES

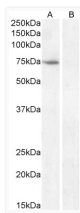
Clonality	Polyclonal
Concentration	0.5 mg/mL
Conjugation	Unconjugated
Purification	Purified from goat serum by ammonium sulphate precipitation followed by antigen affinity chromatography using the immunizing peptide.
Dilution Range	Peptide ELISA: antibody detection limit dilution 1:64000. WB: Approx 75kDa band observed in lysates of cell line Kelly, ans in Rat Brain lysates (calculated MW of 45.1kDa according to human NP_005094.1 and 45.2kDa according to Rat NP_112328.1). T
Formulation	0.5 mg/ml in Tris saline, 0.02% sodium azide, pH7.3 with 0.5% bovine serum albumin. NA
Isotype	IgG
Storage Instruction	Store at -20°C on receipt and minimise freeze-thaw cycles.

TARGET INFORMATION

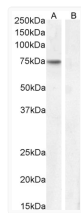
Gene ID	9638
Gene Symbol	FEZ1
UniProt ID	FEZ1_HUMAN
Immunogen Region	Internal
Immunogen Sequence	QNKQKEQRELMKK
Specificity	This antibody is expected to recognize isoform 1 (NP_005094.1) only.

ADDITIONAL INFORMATION

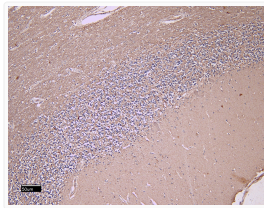
Note **STRICTLY FOR FURTHER SCIENTIFIC RESEARCH USE ONLY (RUO). MUST NOT TO BE USED IN DIAGNOSTIC OR THERAPEUTIC APPLICATIONS.**



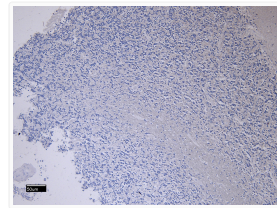
STJ71041 (0.1 µg/ml) staining of Kelly cell lysate (A) + Peptide (B) (35 µg protein in RIPA buffer). Detected by chemiluminescence.



STJ71041 (0.1 µg/ml) staining of Rat Brain ysate (A) + Peptide (B) (35 µg protein in RIPA buffer). Detected by chemiluminescence.



STJ71041 (5 µg/ml) staining of paraffin embedded Human Cerebellum. Heat induced antigen retrieval with citrate buffer pH 6, HRP-staining.



STJ71041 Negative Control showing staining of paraffin embedded Human Cerebellum, with no primary antibody.