

Anti-CPT1A antibody (Internal) (STJ70998)

GENERAL INFORMATION

Product Type	Primary antibodies
Applications	Pep-ELISA/WB/IHC
Host / Source	Goat
Reactivity	Human

PRODUCT PROPERTIES

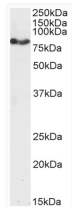
Clonality	Polyclonal
Concentration	0.5 mg/mL
Conjugation	Unconjugated
Purification	Purified from goat serum by ammonium sulphate precipitation followed by antigen affinity chromatography using the immunizing peptide.
Dilution Range	Peptide ELISA: antibody detection limit dilution 1:128000. WB: Approx 80-85kDa band observed in lysates of cell line MCF7 (calculated MW of 86.2kDa according to NP_001027017.1). Recommended concentration: 1-3µg/ml. Primary incubation 1 hour at ro
Formulation	0.5 mg/ml in Tris saline, 0.02% sodium azide, pH7.3 with 0.5% bovine serum albumin. NA
Isotype	IgG
Storage Instruction	Store at -20°C on receipt and minimise freeze-thaw cycles.

TARGET INFORMATION

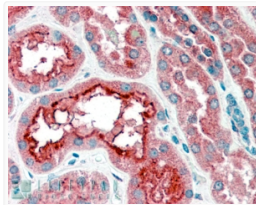
Gene ID	1374
Gene Symbol	CPT1A
UniProt ID	CPT1A_HUMAN
Immunogen Region	Internal
Immunogen Sequence	DPAQTVEQRLKLFK
Specificity	This antibody is expected to recognize both reported isoforms (NP_001867.2; NP_001027017.1) but is not expected to recognise CPT1B.

ADDITIONAL INFORMATION

Note **STRICTLY FOR FURTHER SCIENTIFIC RESEARCH USE ONLY (RUO). MUST NOT TO BE USED IN DIAGNOSTIC OR THERAPEUTIC APPLICATIONS.**



STJ70998 (2µg/ml) staining of MCF7 cell lysate (35µg protein in RIPA buffer). Detected by chemiluminescence.



STJ70998 (4µg/ml) staining of paraffin embedded Human Kidney. Steamed antigen retrieval with citrate buffer pH 6, AP-staining. This data is from a previous batch, not on sale.