

Anti-ACSL5 antibody (C-Term) (STJ70923)

GENERAL INFORMATION

Product Type	Primary antibodies
Applications	Pep-ELISA/WB/IHC
Host / Source	Goat
Reactivity	Human

PRODUCT PROPERTIES

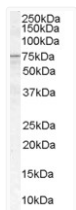
Clonality	Polyclonal
Concentration	0.5 mg/mL
Conjugation	Unconjugated
Purification	Purified from goat serum by ammonium sulphate precipitation followed by antigen affinity chromatography using the immunizing peptide.
Dilution Range	Peptide ELISA: antibody detection limit dilution 1:16000. WB: Approx 75kDa band observed in Human Spleen lysates (calculated MW of 76.0kDa according to NP_976313.1 and NP_976314.1). Recommended concentration: 1-3µg/ml. IHC: Paraffin embedded H
Formulation	0.5 mg/ml in Tris saline, 0.02% sodium azide, pH7.3 with 0.5% bovine serum albumin. NA
Isotype	IgG
Storage Instruction	Store at -20°C on receipt and minimise freeze-thaw cycles.

TARGET INFORMATION

Gene ID	51703
Gene Symbol	ACSL5
UniProt ID	ACSL5_HUMAN
Immunogen Region	C-Term
Immunogen Sequence	RTQIDSLYEHIQD
Specificity	This antibody is expected to recognise isoform a (NP_057318.2) and isoform b (NP_976313.1 and NP_976314.1).

ADDITIONAL INFORMATION

Note STRICTLY FOR FURTHER SCIENTIFIC RESEARCH USE ONLY (RUO). MUST NOT TO BE USED IN DIAGNOSTIC OR THERAPEUTIC APPLICATIONS.



STJ70923 (1µg/ml) staining of Human Spleen lysate (35µg protein in RIPA buffer). Primary incubation was 1 hour. Detected by chemiluminescence.