

## Anti-EXOC7 antibody (Internal) (STJ70915)

### GENERAL INFORMATION

Product Type	Primary antibodies
Applications	Pep-ELISA/WB/IHC
Host / Source	Goat
Reactivity	Human/Mouse/Rat/Pig/Cow

### PRODUCT PROPERTIES

Clonality	Polyclonal
Concentration	0.5 mg/mL
Conjugation	Unconjugated
Purification	Purified from goat serum by ammonium sulphate precipitation followed by antigen affinity chromatography using the immunizing peptide.
Dilution Range	Peptide ELISA: antibody detection limit dilution 1:16000. WB: Approx 70kDa band observed in Human Lung lysates (calculated MW of 74.7kDa according to NP_056034.2). Recommended concentration: 0.5-1.5µg/ml. IHC: In paraffin embedded Human Adren
Formulation	0.5 mg/ml in Tris saline, 0.02% sodium azide, pH7.3 with 0.5% bovine serum albumin. NA
Isotype	IgG
Storage Instruction	Store at -20°C on receipt and minimise freeze-thaw cycles.

### TARGET INFORMATION

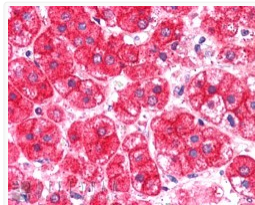
Gene ID	<a href="#">23265</a>
Gene Symbol	<a href="#">EXOC7</a>
UniProt ID	<a href="#">EXOC7_HUMAN</a>
Immunogen Region	Internal
Immunogen Sequence	DNIKNDPDKKEYN
Specificity	This antibody is expected to recognise all five reported isoforms (NP_001013861.1; NP_056034.2; NP_001138769.1; NP_001138771.1; NP_001138770.1).

### ADDITIONAL INFORMATION

Note **STRICTLY FOR FURTHER SCIENTIFIC RESEARCH USE ONLY (RUO). MUST NOT TO BE USED IN DIAGNOSTIC OR THERAPEUTIC APPLICATIONS.**



STJ70915 (0.5µg/ml) staining of Human Lung lysate (35µg protein in RIPA buffer). Primary incubation was 1 hour. Detected by chemiluminescence.



STJ70915 (0.5µg/ml) staining of paraffin embedded Human Pancreas. Steamed antigen retrieval with citrate buffer pH 6, AP-staining.