

## Anti-PGRMC1/MPR antibody (C-Term) (STJ70902)

### GENERAL INFORMATION

Product Type	Primary antibodies
Applications	Pep-ELISA/WB/IHC/IF
Host / Source	Goat
Reactivity	Human/Mouse/Rat

### PRODUCT PROPERTIES

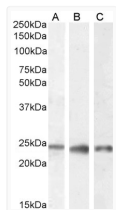
Clonality	Polyclonal
Concentration	0.5 mg/mL
Conjugation	Unconjugated
Purification	Purified from goat serum by ammonium sulphate precipitation followed by antigen affinity chromatography using the immunizing peptide.
Dilution Range	Peptide ELISA: antibody detection limit dilution 1:4000. WB: Approx 24kDa band observed in Human Kidney, Liver and Testis lysates, and approx 25kDa in Mouse Testis lysates (calculated MW of 21.7kDa according to Human NP_006658.1 and Mouse NP_0580)
Formulation	0.5 mg/ml in Tris saline, 0.02% sodium azide, pH7.3 with 0.5% bovine serum albumin. NA
Isotype	IgG
Storage Instruction	Store at -20°C on receipt and minimise freeze-thaw cycles.

### TARGET INFORMATION

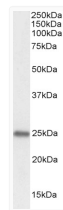
Gene ID	<a href="#">10857</a>
Gene Symbol	<a href="#">PGRMC1</a>
UniProt ID	<a href="#">PGRC1_HUMAN</a>
Immunogen Region	C-Term
Immunogen Sequence	EPKDESARKND

### ADDITIONAL INFORMATION

Note **STRICTLY FOR FURTHER SCIENTIFIC RESEARCH USE ONLY (RUO). MUST NOT TO BE USED IN DIAGNOSTIC OR THERAPEUTIC APPLICATIONS.**



STJ70902 (0.1 µg/ml) staining of Human Kidney (A), Liver (B) and Testes (C) lysate (35 µg protein in RIPA buffer). Detected by chemiluminescence.



STJ70902 (0.1 µg/ml) staining of Mouse Testes lysate (35 µg protein in RIPA buffer). Detected by chemiluminescence.