

## Anti-DEAD-box protein 6 antibody (C-Term) (STJ70871)

### GENERAL INFORMATION

Product Type	Primary antibodies
Applications	Pep-ELISA/WB/IHC
Host / Source	Goat
Reactivity	Human/Mouse/Rat/Dog

### PRODUCT PROPERTIES

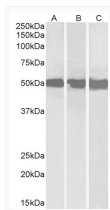
Clonality	Polyclonal
Concentration	0.5 mg/mL
Conjugation	Unconjugated
Purification	Purified from goat serum by ammonium sulphate precipitation followed by antigen affinity chromatography using the immunizing peptide.
Dilution Range	Peptide ELISA: antibody detection limit dilution 1:128000. WB: Approx 50kDa band observed in lysates of cell lines Daudi, Jurkat and HepG2 (calculated MW of 53.2kDa according to NP_004388.1). Recommended concentration: 0.3-1µg/ml. Primary incubat
Formulation	0.5 mg/ml in Tris saline, 0.02% sodium azide, pH7.3 with 0.5% bovine serum albumin. NA
Isotype	IgG
Storage Instruction	Store at -20°C on receipt and minimise freeze-thaw cycles.

### TARGET INFORMATION

Gene ID	<a href="#">1656</a>
Gene Symbol	<a href="#">DDX6</a>
UniProt ID	<a href="#">DDX6_HUMAN</a>
Immunogen Region	C-Term
Immunogen Sequence	AEYHSEPVEDEKP

### ADDITIONAL INFORMATION

Note STRICTLY FOR FURTHER SCIENTIFIC RESEARCH USE ONLY (RUO). MUST NOT TO BE USED IN DIAGNOSTIC OR THERAPEUTIC APPLICATIONS.



STJ70871 (0.3µg/ml) staining of Daudi (A), Jurkat (B) and HepG2 (C) lysates (35µg protein in RIPA buffer). Detected by chemiluminescence.