

Anti-ERG antibody (C-Term) (STJ70848)

GENERAL INFORMATION

Product Type	Primary antibodies
Applications	Pep-ELISA/WB/FC/IF
Host / Source	Goat
Reactivity	Human

PRODUCT PROPERTIES

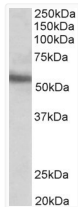
Clonality	Polyclonal
Concentration	0.5 mg/mL
Conjugation	Unconjugated
Purification	Purified from goat serum by ammonium sulphate precipitation followed by antigen affinity chromatography using the immunizing peptide.
Dilution Range	Peptide ELISA: antibody detection limit dilution 1:16000. WB: Approx 55kDa band observed in lysates of cell line MOLT4 (calculated MW of 53.8kDa according to NP_891548.1). Recommended concentration: 0.1-0.3µg/ml. Primary incubation 1 hour at room
Formulation	0.5 mg/ml in Tris saline, 0.02% sodium azide, pH7.3 with 0.5% bovine serum albumin. NA
Isotype	IgG
Storage Instruction	Store at -20°C on receipt and minimise freeze-thaw cycles.

TARGET INFORMATION

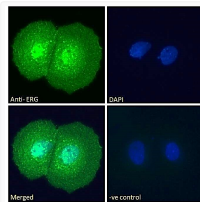
Gene ID	2078
Gene Symbol	ERG
UniProt ID	ERG_HUMAN
Immunogen Region	C-Term
Immunogen Sequence	PNTRLPTSHMPHS
Specificity	This antibody is expected to recognise all reported isoforms (NP_891548.1; NP_004440.1; NP_001129626.1; NP_001129627.1; NP_001230358.1)

ADDITIONAL INFORMATION

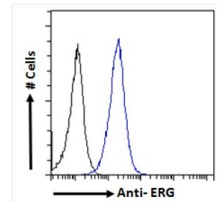
Note STRICTLY FOR FURTHER SCIENTIFIC RESEARCH USE ONLY (RUO). MUST NOT TO BE USED IN DIAGNOSTIC OR THERAPEUTIC APPLICATIONS.



STJ70848 (0.1 µg/ml) staining of MOLT4 lysate (35 µg protein in RIPA buffer). Detected by chemiluminescence.



STJ70848 Immunofluorescence analysis of paraformaldehyde fixed MCF7 cells, permeabilized with 0.15% Triton. Primary incubation 1 hr (10 µg/ml) followed by Alexa Fluor 488 secondary antibody (2 µg/ml), showing nuclear and cytoplasmic staining. The nuclear stain is DAPI (blue). Negative control: Unimmunized goat IgG (10 µg/ml) followed by Alexa Fluor 488 secondary antibody (2 µg/ml).



STJ70848 Flow cytometric analysis of paraformaldehyde fixed MCF7 cells (blue line), permeabilized with 0.5% Triton. Primary incubation 1 hr (10 µg/ml) followed by Alexa Fluor 488 secondary antibody (1 µg/ml). IgG control: Unimmunized goat IgG (black line) followed by Alexa Fluor 488 secondary antibody.