

Anti-14-3-3 sigma/Stratifin antibody (Internal) (STJ70838)

GENERAL INFORMATION

Product Type	Primary antibodies
Applications	Pep-ELISA/WB/IHC
Host / Source	Goat
Reactivity	Human/Mouse/Rat/Dog/Pig

PRODUCT PROPERTIES

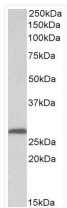
Clonality	Polyclonal
Concentration	0.5 mg/mL
Conjugation	Unconjugated
Purification	Purified from goat serum by ammonium sulphate precipitation followed by antigen affinity chromatography using the immunizing peptide.
Dilution Range	Peptide ELISA: antibody detection limit dilution 1:16000. WB: Approx 26-28kDa band observed in Human, Mouse and Rat Skin lysates and in lysates of cell lines A431 and U2OS (calculated MW of 27.8kDa according to Human NP_006133.1, Mouse NP_061224.
Formulation	0.5 mg/ml in Tris saline, 0.02% sodium azide, pH7.3 with 0.5% bovine serum albumin. NA
Isotype	IgG
Storage Instruction	Store at -20°C on receipt and minimise freeze-thaw cycles.

TARGET INFORMATION

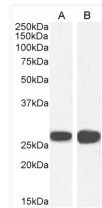
Gene ID	2810
Gene Symbol	SFN
UniProt ID	1433S_HUMAN
Immunogen Region	Internal
Immunogen Sequence	DLHTLSEDSYKDST

ADDITIONAL INFORMATION

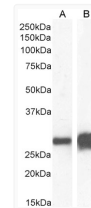
Note STRICTLY FOR FURTHER SCIENTIFIC RESEARCH USE ONLY (RUO). MUST NOT TO BE USED IN DIAGNOSTIC OR THERAPEUTIC APPLICATIONS.



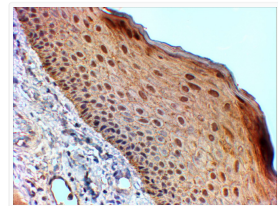
STJ70838 (0.03 µg/ml) staining of Human Skin lysate (35 µg protein in RIPA buffer). Primary incubation was 1 hour. Detected by chemiluminescence.



STJ70838 (0.03 µg/ml) staining of A431 (A) and U2OS (B) cell lysate (35 µg protein in RIPA buffer). Detected by chemiluminescence.



STJ70838 (0.03 µg/ml) staining of Mouse (A) and Rat (B) Skin lysate (35 µg protein in RIPA buffer). Detected by chemiluminescence.



STJ70838 (2 µg/ml) staining of paraffin embedded Human Skin. Steamed antigen retrieval with Tris/EDTA buffer pH 9, HRP-staining.