

## Anti-ROBO1/DUTT1 antibody (Internal) (STJ70835)

### GENERAL INFORMATION

Product Type	Primary antibodies
Applications	Pep-ELISA/IF/IHC
Host / Source	Goat
Reactivity	Human/Mouse/Rat/Dog/Cow

### PRODUCT PROPERTIES

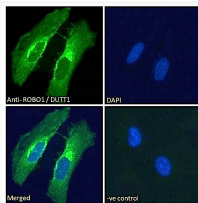
Clonality	Polyclonal
Concentration	0.5 mg/mL
Conjugation	Unconjugated
Purification	Purified from goat serum by ammonium sulphate precipitation followed by antigen affinity chromatography using the immunizing peptide.
Dilution Range	Peptide ELISA: antibody detection limit dilution 1:16000. IHC: Paraffin embedded Human Brain (Cortex) and Kidney. Recommended concentration: 5-6µg/ml. IF: Strong expression of the protein seen in the Plasma membrane and Golgi/ER of HeLa and U
Formulation	0.5 mg/ml in Tris saline, 0.02% sodium azide, pH7.3 with 0.5% bovine serum albumin. NA
Isotype	IgG
Storage Instruction	Store at -20°C on receipt and minimise freeze-thaw cycles.

### TARGET INFORMATION

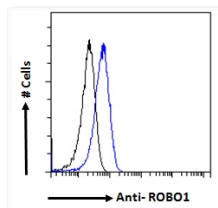
Gene ID	<a href="#">6091</a>
Gene Symbol	<a href="#">ROBO1</a>
UniProt ID	<a href="#">ROBO1_HUMAN</a>
Immunogen Region	Internal
Immunogen Sequence	GDVDLSNKINEMK
Specificity	Not expected to cross-react with ROBO2 or ROBO3.

### ADDITIONAL INFORMATION

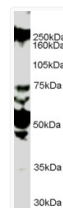
Note STRICTLY FOR FURTHER SCIENTIFIC RESEARCH USE ONLY (RUO). MUST NOT TO BE USED IN DIAGNOSTIC OR THERAPEUTIC APPLICATIONS.



STJ70835 Immunofluorescence analysis of paraformaldehyde fixed HeLa cells, permeabilized with 0.15% Triton. Primary incubation 1hr (10ug/ml) followed by Alexa Fluor 488 secondary antibody (2ug/ml), showing Golgi and membrane staining. The nuclear stain is DAPI (blue). Negative control: Unimmunized goat IgG (10ug/ml) followed by Alexa Fluor 488 secondary antibody (2ug/ml).



STJ70835 Flow cytometric analysis of paraformaldehyde fixed HeLa cells (blue line), permeabilized with 0.5% Triton. Primary incubation overnight (10ug/ml) followed by Alexa Fluor 488 secondary antibody (1ug/ml). IgG control: Unimmunized goat IgG followed by Alexa Fluor 488 secondary antibody.



STJ70835 (1µg/ml) staining of HUVEC lysate (35µg protein in RIPA buffer). Detected by chemiluminescence.