

Anti-PIM2 antibody (Internal) (STJ70829)

GENERAL INFORMATION

Product Type	Primary antibodies
Applications	Pep-ELISA/WB-Trf
Host / Source	Goat
Reactivity	Human/Mouse/Dog/Cow

PRODUCT PROPERTIES

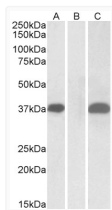
Clonality	Polyclonal
Concentration	0.5 mg/mL
Conjugation	Unconjugated
Purification	Purified from goat serum by ammonium sulphate precipitation followed by antigen affinity chromatography using the immunizing peptide.
Dilution Range	Peptide ELISA: antibody detection limit dilution 1:16000. WB: In transfected HEK293 transiently expressing Human PIM2 (myc and DYKDDDDK tagged) , a band of approx. 38kDa is observed. No bands are observed in mock-transfected HEK293 and the same b
Formulation	0.5 mg/ml in Tris saline, 0.02% sodium azide, pH7.3 with 0.5% bovine serum albumin. NA
Isotype	IgG
Storage Instruction	Store at -20°C on receipt and minimise freeze-thaw cycles.

TARGET INFORMATION

Gene ID	11040
Gene Symbol	PIM2
UniProt ID	PIM2_HUMAN
Immunogen Region	Internal
Immunogen Sequence	PPGGKDREAFAEAE

ADDITIONAL INFORMATION

Note STRICTLY FOR FURTHER SCIENTIFIC RESEARCH USE ONLY (RUO). MUST NOT TO BE USED IN DIAGNOSTIC OR THERAPEUTIC APPLICATIONS.



HEK293 lysate (10ug protein in RIPA buffer) overexpressing Human PIM2 with C-terminal MYC tag probed with STJ70829 (1ug/ml) in Lane A and probed with anti-MYC Tag (1/1000) in lane C. Mock-transfected HEK293 probed with STJ70829 (1mg/ml) in Lane B. Primary incubations were for 1 hour. Detected by chemiluminescence.