

Anti-FOXC1 antibody (Internal) (STJ70827)

GENERAL INFORMATION

Product Type	Primary antibodies
Applications	Pep-ELISA/WB
Host / Source	Goat
Reactivity	Human/Mouse/Pig

PRODUCT PROPERTIES

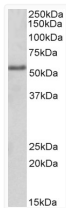
Clonality	Polyclonal
Concentration	0.5 mg/mL
Conjugation	Unconjugated
Purification	Purified from goat serum by ammonium sulphate precipitation followed by antigen affinity chromatography using the immunizing peptide.
Dilution Range	Peptide ELISA: antibody detection limit dilution 1:32000. WB: Approx 55kDa band observed in lysates of cell line HEK293 (calculated MW of 56.8kDa according to NP_001444.2). Recommended concentration: 2-4µg/ml.
Formulation	0.5 mg/ml in Tris saline, 0.02% sodium azide, pH7.3 with 0.5% bovine serum albumin. NA
Isotype	IgG
Storage Instruction	Store at -20°C on receipt and minimise freeze-thaw cycles.

TARGET INFORMATION

Gene ID	2296
Gene Symbol	FOXC1
UniProt ID	FOXC1_HUMAN
Immunogen Region	Internal
Immunogen Sequence	DAVKDKKEEKDR LH

ADDITIONAL INFORMATION

Note STRICTLY FOR FURTHER SCIENTIFIC RESEARCH USE ONLY (RUO). MUST NOT TO BE USED IN DIAGNOSTIC OR THERAPEUTIC APPLICATIONS.



STJ70827 (2µg/ml) staining of HEK293 lysate (35µg protein in RIPA buffer). Primary incubation was 1 hour. Detected by chemiluminescence.