

Anti-FZD8/frizzled 8 antibody (C-Term) (STJ70823)

GENERAL INFORMATION

Product Type	Primary antibodies
Applications	Pep-ELISA/WB/IHC/IF/EM
Host / Source	Goat
Reactivity	Human/Mouse/Rat/Dog/Cow

PRODUCT PROPERTIES

Clonality	Polyclonal
Concentration	0.5 mg/mL
Conjugation	Unconjugated
Purification	Purified from goat serum by ammonium sulphate precipitation followed by antigen affinity chromatography using the immunizing peptide.
Dilution Range	Peptide ELISA: antibody detection limit dilution 1:32000. WB: Approx 75kDa band observed in Human Pancreas lysates (calculated MW of 73.3kDa according to NP_114072.1). Recommended concentration: 1-3µg/ml. Primary incubation was 1 hour. This antib
Formulation	0.5 mg/ml in Tris saline, 0.02% sodium azide, pH7.3 with 0.5% bovine serum albumin. NA
Isotype	IgG
Storage Instruction	Store at -20°C on receipt and minimise freeze-thaw cycles.

TARGET INFORMATION

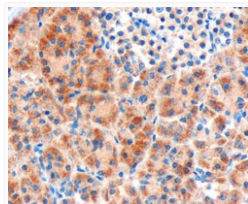
Gene ID	8325
Gene Symbol	FZD8
UniProt ID	FZD8_HUMAN
Immunogen Region	C-Term
Immunogen Sequence	SYPKQMPLSQV

ADDITIONAL INFORMATION

Note STRICTLY FOR FURTHER SCIENTIFIC RESEARCH USE ONLY (RUO). MUST NOT TO BE USED IN DIAGNOSTIC OR THERAPEUTIC APPLICATIONS.



STJ70823 (1µg/ml) staining of Human Pancreas lysate (35µg protein in RIPA buffer). Detected by chemiluminescence.



STJ70823 (3µg/ml) staining of paraffin embedded Human Pancreas. Microwaved antigen retrieval with Tris/EDTA buffer pH9, HRP-