

## Anti-Karyopherin beta 1 antibody (C-Term) (STJ70816)

### GENERAL INFORMATION

Product Type	Primary antibodies
Applications	Pep-ELISA/WB/IHC/IF/FC
Host / Source	Goat
Reactivity	Human/Mouse/Rat/Dog/Cow

### PRODUCT PROPERTIES

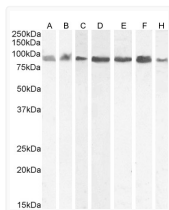
Clonality	Polyclonal
Concentration	0.5 mg/mL
Conjugation	Unconjugated
Purification	Purified from goat serum by ammonium sulphate precipitation followed by antigen affinity chromatography using the immunizing peptide.
Dilution Range	Peptide ELISA: antibody detection limit dilution 1:32000. WB: Approx 90-95-kDa band observed in lysates of cell lines A431, Daudi, HEK293, HeLa, Jurkat, Kelly and KNRK (calculated MW of 97.2kDa according to Human NP_002256.2 and Rat NP_058759.2).
Formulation	0.5 mg/ml in Tris saline, 0.02% sodium azide, pH7.3 with 0.5% bovine serum albumin. NA
Isotype	IgG
Storage Instruction	Store at -20°C on receipt and minimise freeze-thaw cycles.

### TARGET INFORMATION

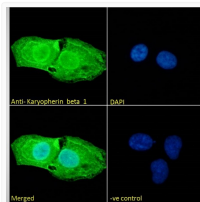
Gene ID	<a href="#">3837</a>
Gene Symbol	<a href="#">KPNB1</a>
UniProt ID	<a href="#">IMB1_HUMAN</a>
Immunogen Region	C-Term
Immunogen Sequence	RRSKTNKAKTLAT

### ADDITIONAL INFORMATION

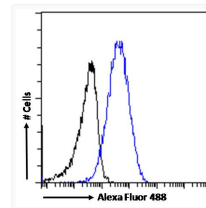
Note **STRICTLY FOR FURTHER SCIENTIFIC RESEARCH USE ONLY (RUO). MUST NOT TO BE USED IN DIAGNOSTIC OR THERAPEUTIC APPLICATIONS.**



STJ70816 (0.03 µg/ml) staining of A431 (A), HEK293 (B), Jurkat (C), (0.01 µg/ml) Daudi (D), HeLa (E) and (0.1 µg/ml) Kelly (F) and KNRK (G) cell lysate (35 µg protein in RIPA buffer). Detected by chemiluminescence.



STJ70816 Immunofluorescence analysis of paraformaldehyde fixed U2OS cells, permeabilized with 0.15% Triton. Primary incubation 1hr (10 µg/ml) followed by Alexa Fluor 488 secondary antibody (2 µg/ml), showing nuclear membrane, nuclear and cytoplasmic staining. The nuclear stain is DAPI (blue). Negative control: Unimmunized goat IgG (10 µg/ml) followed by Alexa Fluor 488 secondary antibody (2 µg/ml).



STJ70816 Flow cytometric analysis of paraformaldehyde fixed A431 cells (blue line), permeabilized with 0.5% Triton. Primary incubation 1hr (10 µg/ml) followed by Alexa Fluor 488 secondary antibody (1 µg/ml). IgG control: Unimmunized goat IgG (black line) followed by Alexa Fluor 488 secondary antibody.