

Anti-CBX3/HP1 Gamma antibody (Internal) (STJ70791)

GENERAL INFORMATION

Product Type	Primary antibodies
Applications	Pep-ELISA/WB/IHC/IF/FC
Host / Source	Goat
Reactivity	Human/Mouse/Rat/Cow/Dog

PRODUCT PROPERTIES

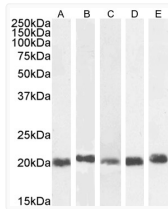
Clonality	Polyclonal
Concentration	0.5 mg/mL
Conjugation	Unconjugated
Purification	Purified from goat serum by ammonium sulphate precipitation followed by antigen affinity chromatography using the immunizing peptide.
Dilution Range	Peptide ELISA: antibody detection limit dilution 1:32000. WB: Approx. 20kDa band observed in lysates of cell lines A431, HeLa, HepG2, NIH3T3 and NSO (calculated MW of 20.8kDa according to NP_009207.2 and NP_057671.2). Recommended concentration: 0
Formulation	0.5 mg/ml in Tris saline, 0.02% sodium azide, pH7.3 with 0.5% bovine serum albumin. NA
Isotype	IgG
Storage Instruction	Store at -20°C on receipt and minimise freeze-thaw cycles.

TARGET INFORMATION

Gene ID	11335
Gene Symbol	CBX3
UniProt ID	CBX3_HUMAN
Immunogen Region	Internal
Immunogen Sequence	EAFLNSQKAGKEKD
Specificity	No cross-reactivity expected with HP1-alpha and HP1-beta. Reported variants represent identical protein: NP_009207.2, NP_057671.2

ADDITIONAL INFORMATION

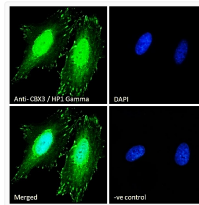
Note STRICTLY FOR FURTHER SCIENTIFIC RESEARCH USE ONLY (RUO). MUST NOT TO BE USED IN DIAGNOSTIC OR THERAPEUTIC APPLICATIONS.



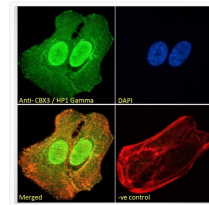
STJ70791 (0. 03µg/ml) staining of A431 (A) , HeLa (B) , HepG2 (C) , Jurkat (D) and K562 (E) nuclear cell lysate. (35µg protein in RIPA buffer). Detected by chemiluminescence.



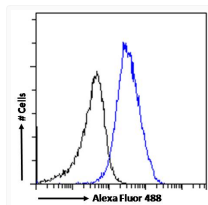
STJ70791 (0. 1µg/ml) staining of NIH3T3 nuclear cell lysate (35µg protein in RIPA buffer). Detected by chemiluminescence.



STJ70791 Immunofluorescence analysis of paraformaldehyde fixed HeLa cells, permeabilized with 0. 15% Triton. Primary incubation 1hr (10ug/ml) followed by Alexa Fluor 488 secondary antibody (2ug/ml) , showing strong nuclear and some cytoplasmic staining. The nuclear stain is DAPI (blue). Negative control: Unimmunized goat IgG (10ug/ml) followed by Alexa Fluor 488 secondary antibody (2ug/ml).



STJ70791 Immunofluorescence analysis of paraformaldehyde fixed U2OS cells, permeabilized with 0. 15% Triton. Primary incubation 1hr (10ug/ml) followed by Alexa Fluor 488 secondary antibody (2ug/ml) , showing strong nuclear and some cytoplasmic staining. Actin filaments were stained with phalloidin (red) and the nuclear stain is DAPI (blue). Negative control: Unimmunized goat IgG (10ug/ml) followed by Alexa Fluor 488 secondary antibody (2ug/ml).



STJ70791 Flow cytometric analysis of paraformaldehyde fixed HeLa cells (blue line) , permeabilized with 0. 5% Triton. Primary incubation 1hr (10ug/ml) followed by Alexa Fluor 488 secondary antibody (1ug/ml). IgG control: Unimmunized goat IgG (black line) followed by Alexa Fluor 488 secondary antibody.