

Anti-ENPP1/PC1 antibody (C-Term) (STJ70785)

GENERAL INFORMATION

Product Type	Primary antibodies
Applications	Pep-ELISA/IHC
Host / Source	Goat
Reactivity	Human/Mouse/Rat

PRODUCT PROPERTIES

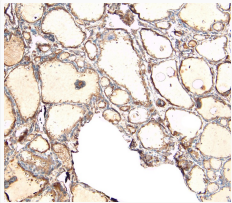
Clonality	Polyclonal
Concentration	0.5 mg/mL
Conjugation	Unconjugated
Purification	Purified from goat serum by ammonium sulphate precipitation followed by antigen affinity chromatography using the immunizing peptide.
Dilution Range	Peptide ELISA: antibody detection limit dilution 1:64000. IHC: Paraffin embedded Human Placenta. Recommended concentration: 4-5µg/ml.
Formulation	0.5 mg/ml in Tris saline, 0.02% sodium azide, pH7.3 with 0.5% bovine serum albumin. NA
Isotype	IgG
Storage Instruction	Store at -20°C on receipt and minimise freeze-thaw cycles.

TARGET INFORMATION

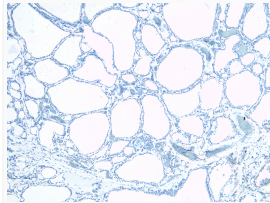
Gene ID	5167
Gene Symbol	ENPP1
UniProt ID	ENPP1_HUMAN
Immunogen Region	C-Term
Immunogen Sequence	KTHLPTFSQED

ADDITIONAL INFORMATION

Note **STRICTLY FOR FURTHER SCIENTIFIC RESEARCH USE ONLY (RUO). MUST NOT TO BE USED IN DIAGNOSTIC OR THERAPEUTIC APPLICATIONS.**



STJ70785 (8µg/ml) staining of paraffin embedded Human Thyroid Gland. Heat induced antigen retrieval with citrate buffer pH 6, HRP-staining.



STJ70785 Negative Control showing staining of paraffin embedded Human Thyroid Gland, with no primary antibody.