

Anti-GOLGA3 antibody (C-Term) (STJ70774)

GENERAL INFORMATION

Product Type	Primary antibodies
Applications	Pep-ELISA/WB
Host / Source	Goat
Reactivity	Human

PRODUCT PROPERTIES

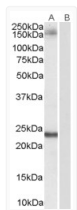
Clonality	Polyclonal
Concentration	0.5 mg/mL
Conjugation	Unconjugated
Purification	Purified from goat serum by ammonium sulphate precipitation followed by antigen affinity chromatography using the immunizing peptide.
Dilution Range	Peptide ELISA: antibody detection limit dilution 1:16000. WB: Approx 170kDa band observed in human HeLa lysates (calculated MW of 167kDa according to NP_005886.2). Recommended concentration: 0.1-0.3µg/ml. An additional band of unknown identity was observed.
Formulation	0.5 mg/ml in Tris saline, 0.02% sodium azide, pH7.3 with 0.5% bovine serum albumin. NA
Isotype	IgG
Storage Instruction	Store at -20°C on receipt and minimise freeze-thaw cycles.

TARGET INFORMATION

Gene ID	2802
Gene Symbol	GOLGA3
UniProt ID	GOGA3_HUMAN
Immunogen Region	C-Term
Immunogen Sequence	HSQSRASKEGPGE

ADDITIONAL INFORMATION

Note STRICTLY FOR FURTHER SCIENTIFIC RESEARCH USE ONLY (RUO). MUST NOT TO BE USED IN DIAGNOSTIC OR THERAPEUTIC APPLICATIONS.



STJ70774 (0.1 µg/ml) staining of HeLa lysate (35 µg protein in RIPA buffer). Primary incubation was 1 hour. Detected by chemiluminescence.