

## Anti-OASIS/CREB3L1 antibody (C-Term) (STJ70770)

### GENERAL INFORMATION

Product Type	Primary antibodies
Applications	Pep-ELISA/WB/IHC
Host / Source	Goat
Reactivity	Human/Mouse/Rat

### PRODUCT PROPERTIES

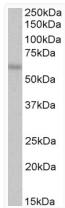
Clonality	Polyclonal
Concentration	0.5 mg/mL
Conjugation	Unconjugated
Purification	Purified from goat serum by ammonium sulphate precipitation followed by antigen affinity chromatography using the immunizing peptide.
Dilution Range	Peptide ELISA: antibody detection limit dilution 1:32000. WB: Approx 60kDa band observed in lysates of cell line A549 (calculated MW of 57.0kDa according to NP_443086.1). Recommended concentration: 1-3µg/ml. IHC: Paraffin embedded Human Skele
Formulation	0.5 mg/ml in Tris saline, 0.02% sodium azide, pH7.3 with 0.5% bovine serum albumin. NA
Isotype	IgG
Storage Instruction	Store at -20°C on receipt and minimise freeze-thaw cycles.

### TARGET INFORMATION

Immunogen Region	C-Term
Immunogen Sequence	DFSHSKEWFHDRD

### ADDITIONAL INFORMATION

Note	STRICTLY FOR FURTHER SCIENTIFIC RESEARCH USE ONLY (RUO). MUST NOT TO BE USED IN DIAGNOSTIC OR THERAPEUTIC APPLICATIONS.
------	---



STJ70770 (1µg/ml) staining of A549 lysate (35µg protein in RIPA buffer). Primary incubation was 1 hour. Detected by chemiluminescence.