

Anti-ERBB3/HER3 antibody (C-Term) (STJ70764)

GENERAL INFORMATION

Product Type	Primary antibodies
Applications	Pep-ELISA/FC/IF/IHC
Host / Source	Goat
Reactivity	Human/Mouse/Rat/Dog/Pig/Cow

PRODUCT PROPERTIES

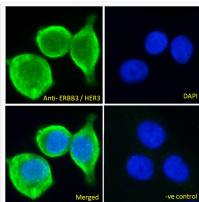
Clonality	Polyclonal
Concentration	0.5 mg/mL
Conjugation	Unconjugated
Purification	Purified from goat serum by ammonium sulphate precipitation followed by antigen affinity chromatography using the immunizing peptide.
Dilution Range	Peptide ELISA: antibody detection limit dilution 1:32000. IHC: Paraffin embedded Human Lung. Recommend concentration: 5µg/ml. IF: Strong expression of the protein seen in the cytoplasm/membranes of MCF7 cells. Recommended concentration: 10µg/
Formulation	0.5 mg/ml in Tris saline, 0.02% sodium azide, pH7.3 with 0.5% bovine serum albumin. NA
Isotype	IgG
Storage Instruction	Store at -20°C on receipt and minimise freeze-thaw cycles.

TARGET INFORMATION

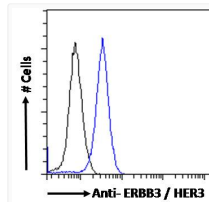
Gene ID	2065
Gene Symbol	ERBB3
UniProt ID	ERBB3_HUMAN
Immunogen Region	C-Term
Immunogen Sequence	HSRLFPKANAQRT
Specificity	This antibody is expected to recognise isoform 1 (NP_001973.2) only.

ADDITIONAL INFORMATION

Note STRICTLY FOR FURTHER SCIENTIFIC RESEARCH USE ONLY (RUO). MUST NOT TO BE USED IN DIAGNOSTIC OR THERAPEUTIC APPLICATIONS.



STJ70764 Immunofluorescence analysis of paraformaldehyde fixed MCF7 cells, permeabilized with 0.15% Triton. Primary incubation 1hr (10ug/ml) followed by Alexa Fluor 488 secondary antibody (2ug/ml), showing plasma membrane/cytoplasmic staining. The nuclear stain is DAPI (blue). Negative control: Unimmunized goat IgG (10ug/ml) followed by Alexa Fluor 488 secondary antibody (2ug/ml).



STJ70764 Flow cytometric analysis of paraformaldehyde fixed MCF7 cells (blue line), permeabilized with 0.5% Triton. Primary incubation 1hr (10ug/ml) followed by Alexa Fluor 488 secondary antibody (1ug/ml). IgG control: Unimmunized goat IgG (black line) followed by Alexa Fluor 488 secondary antibody.