

Anti-STX1A/STX1B antibody (N-Term) (STJ70754)

GENERAL INFORMATION

Product Type	Primary antibodies
Applications	Pep-ELISA/WB
Host / Source	Goat
Reactivity	Human/Mouse/Rat/Dog/Cow

PRODUCT PROPERTIES

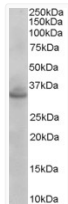
Clonality	Polyclonal
Concentration	0.5 mg/mL
Conjugation	Unconjugated
Purification	Purified from goat serum by ammonium sulphate precipitation followed by antigen affinity chromatography using the immunizing peptide.
Dilution Range	Peptide ELISA: antibody detection limit dilution 1:32000. WB: Approx 35kDa band observed in Mouse Brain lysates (calculated MW of 33.0kDa according to NP_004594.1 and 33.2kDa according to NP_443106.1). Recommended concentration: 0.01-0.03µg/ml.
Formulation	0.5 mg/ml in Tris saline, 0.02% sodium azide, pH7.3 with 0.5% bovine serum albumin. NA
Isotype	IgG
Storage Instruction	Store at -20°C on receipt and minimise freeze-thaw cycles.

TARGET INFORMATION

Gene ID	6804
Gene Symbol	STX1A
UniProt ID	STX1A_HUMAN
Immunogen Region	N-Term
Immunogen Sequence	KDRTQELRTAKD
Specificity	Please note this product is expected to recognize the products of 2 different genes. STX1A (NP_004594.1 and NP_001159375.1) and STX1B (NP_443106.1).

ADDITIONAL INFORMATION

Note **STRICTLY FOR FURTHER SCIENTIFIC RESEARCH USE ONLY (RUO). MUST NOT TO BE USED IN DIAGNOSTIC OR THERAPEUTIC APPLICATIONS.**



STJ70754 (0.003µg/ml) staining of Mouse Brain lysate (35µg protein in RIPA buffer). Primary incubation was 1 hour. Detected by chemiluminescence.