

## Anti-SDHB antibody (C-Term) (STJ70749)

### GENERAL INFORMATION

Product Type	Primary antibodies
Applications	Pep-ELISA/WB/IHC/IF/FC
Host / Source	Goat
Reactivity	Human

### PRODUCT PROPERTIES

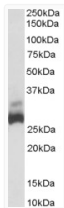
Clonality	Polyclonal
Concentration	0.5 mg/mL
Conjugation	Unconjugated
Purification	Purified from goat serum by ammonium sulphate precipitation followed by antigen affinity chromatography using the immunizing peptide.
Dilution Range	Peptide ELISA: antibody detection limit dilution 1:8000. WB: Approx 28-30kDa band observed in lysates of cell lines HEK293, Jurkat and HeLa (calculated MW of 31.6kDa according to NP_002991.2). Recommended concentration: 0.1-0.3µg/ml. Primary incu
Formulation	0.5 mg/ml in Tris saline, 0.02% sodium azide, pH7.3 with 0.5% bovine serum albumin. NA
Isotype	IgG
Storage Instruction	Store at -20°C on receipt and minimise freeze-thaw cycles.

### TARGET INFORMATION

Gene ID	<a href="#">6390</a>
Gene Symbol	<a href="#">SDHB</a>
UniProt ID	<a href="#">SDHB_HUMAN</a>
Immunogen Region	C-Term
Immunogen Sequence	ATYKEKKASV

### ADDITIONAL INFORMATION

Note STRICTLY FOR FURTHER SCIENTIFIC RESEARCH USE ONLY (RUO). MUST NOT TO BE USED IN DIAGNOSTIC OR THERAPEUTIC APPLICATIONS.



STJ70749 (0.03µg/ml) staining of Human Liver lysate (35µg protein in RIPA buffer). Primary incubation was 1 hour. Detected by chemiluminescence.