

Anti-CTDSP1 antibody (Internal) (STJ70741)

GENERAL INFORMATION

Product Type	Primary antibodies
Applications	Pep-ELISA/WB/IHC
Host / Source	Goat
Reactivity	Human/Mouse/Rat/Dog/Cow

PRODUCT PROPERTIES

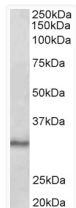
Clonality	Polyclonal
Concentration	0.5 mg/mL
Conjugation	Unconjugated
Purification	Purified from goat serum by ammonium sulphate precipitation followed by antigen affinity chromatography using the immunizing peptide.
Dilution Range	Peptide ELISA: antibody detection limit dilution 1:16000. WB: Approx 30kDa band observed in Mouse Testis lysates (calculated MW of 29.3kDa according to Mouse NP_694728.1). Recommended concentration: 0.1-0.3µg/ml. IHC: In paraffin embedded Hum
Formulation	0.5 mg/ml in Tris saline, 0.02% sodium azide, pH7.3 with 0.5% bovine serum albumin. NA
Isotype	IgG
Storage Instruction	Store at -20°C on receipt and minimise freeze-thaw cycles.

TARGET INFORMATION

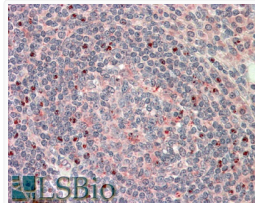
Gene ID	58190
Gene Symbol	CTDSP1
UniProt ID	CTDS1_HUMAN
Immunogen Region	Internal
Immunogen Sequence	EAKAQDSDKIC
Specificity	This antibody is expected to recognize all three reported isoforms (NP_067021.1; NP_872580.1; NP_001193807.1).

ADDITIONAL INFORMATION

Note **STRICTLY FOR FURTHER SCIENTIFIC RESEARCH USE ONLY (RUO). MUST NOT TO BE USED IN DIAGNOSTIC OR THERAPEUTIC APPLICATIONS.**



STJ70741 (0.1 µg/ml) staining of Mouse Testis lysate (35 µg protein in RIPA buffer). Primary incubation was 1 hour. Detected by chemiluminescence.



STJ70741 (5 µg/ml) staining of paraffin embedded Human Tonsil. Steamed antigen retrieval with citrate buffer pH 6, AP-staining.