

Anti-SH2D1A/SAP antibody (Internal) (STJ70732)

GENERAL INFORMATION

Product Type	Primary antibodies
Applications	Pep-ELISA/WB/IP
Host / Source	Goat
Reactivity	Human/Mouse/Rat

PRODUCT PROPERTIES

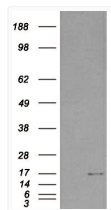
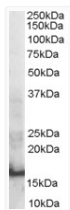
Clonality	Polyclonal
Concentration	0.5 mg/mL
Conjugation	Unconjugated
Purification	Purified from goat serum by ammonium sulphate precipitation followed by antigen affinity chromatography using the immunizing peptide.
Dilution Range	Peptide ELISA: antibody detection limit dilution 1:16000. WB: Approx 16kDa band observed in Human Thymus lysates (calculated MW of 14.2kDa according to NP_002342.1). In transfected HEK293 transiently expressing SH2D1A a band of approx. 16kDa is
Formulation	0.5 mg/ml in Tris saline, 0.02% sodium azide, pH7.3 with 0.5% bovine serum albumin. NA
Isotype	IgG
Storage Instruction	Store at -20°C on receipt and minimise freeze-thaw cycles.

TARGET INFORMATION

Gene ID	4068
Gene Symbol	SH2D1A
UniProt ID	SH21A_HUMAN
Immunogen Region	Internal
Immunogen Sequence	HKRYFRKIKN

ADDITIONAL INFORMATION

Note STRICTLY FOR FURTHER SCIENTIFIC RESEARCH USE ONLY (RUO). MUST NOT TO BE USED IN DIAGNOSTIC OR THERAPEUTIC APPLICATIONS.



STJ70732 staining (0.3µg/ml) of Human Thymus lysate (RIPA buffer, 30µg total protein per lane). Primary incubated for 1 hour. Detected by western blot using chemiluminescence.

HEK293 overexpressing SH2D1A (RC204723) and probed with STJ70732 (mock transfection in first lane), tested by Origene.