

## Anti-Spleen tyrosine kinase/SYK antibody (Internal) (STJ70729)

### GENERAL INFORMATION

Product Type	Primary antibodies
Applications	Pep-ELISA/WB
Host / Source	Goat
Reactivity	Human/Mouse/Rat/Dog/Pig/Cow

### PRODUCT PROPERTIES

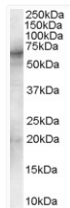
Clonality	Polyclonal
Concentration	0.5 mg/mL
Conjugation	Unconjugated
Purification	Purified from goat serum by ammonium sulphate precipitation followed by antigen affinity chromatography using the immunizing peptide.
Dilution Range	Peptide ELISA: antibody detection limit dilution 1:16000. WB: Approx 70kDa band observed in Human Bone marrow, Lymph Node, and Spleen lysates (calculated MW of 72.1kDa according to NP_003168.2). Recommended concentration: 1-3µg/ml.
Formulation	0.5 mg/ml in Tris saline, 0.02% sodium azide, pH7.3 with 0.5% bovine serum albumin. NA
Isotype	IgG
Storage Instruction	Store at -20°C on receipt and minimise freeze-thaw cycles.

### TARGET INFORMATION

Gene ID	<a href="#">6850</a>
Gene Symbol	<a href="#">SYK</a>
UniProt ID	<a href="#">KSYK_HUMAN</a>
Immunogen Region	Internal
Immunogen Sequence	KYLQQNRHVKDKN
Specificity	This antibody is expected to recognise both reported isoforms (NP_003168.2; NP_001128524.1). Reported pairs of variants represent identical proteins (NP_003168.2 and NP_001167638.1; NP_001128524.1 and NP_001167639.1).

### ADDITIONAL INFORMATION

Note STRICTLY FOR FURTHER SCIENTIFIC RESEARCH USE ONLY (RUO). MUST NOT TO BE USED IN DIAGNOSTIC OR THERAPEUTIC APPLICATIONS.



STJ70729 (1µg/ml) staining of Human Spleen lysate (35µg protein in RIPA buffer). Primary incubation was 1 hour. Detected by chemiluminescence.