

Anti-RBP1 antibody (C-Term) (STJ70670)

GENERAL INFORMATION

Product Type	Primary antibodies
Applications	Pep-ELISA/WB/IF/FC
Host / Source	Goat
Reactivity	Human/Mouse/Cow

PRODUCT PROPERTIES

Clonality	Polyclonal
Concentration	0.5 mg/mL
Conjugation	Unconjugated
Purification	Purified from goat serum by ammonium sulphate precipitation followed by antigen affinity chromatography using the immunizing peptide.
Dilution Range	Peptide ELISA: antibody detection limit dilution 1:4000. WB: Approx 16kDa band observed in NIH3T3 and approx 17kDa in U251 cell lysates. This molecular weight is routinely observed by other sources. (calculated MW of 22.3kDa according to Human NP)
Formulation	0.5 mg/ml in Tris saline, 0.02% sodium azide, pH7.3 with 0.5% bovine serum albumin. NA
Isotype	IgG
Storage Instruction	Store at -20°C on receipt and minimise freeze-thaw cycles.

TARGET INFORMATION

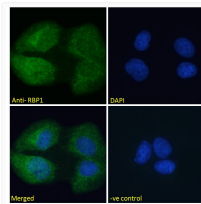
Gene ID	5947
Gene Symbol	RBP1
UniProt ID	RET1_HUMAN
Immunogen Region	C-Term
Immunogen Sequence	VEGVVCKQVFKKVVQ

ADDITIONAL INFORMATION

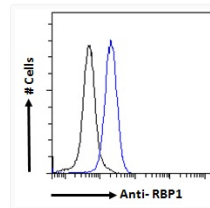
Note STRICTLY FOR FURTHER SCIENTIFIC RESEARCH USE ONLY (RUO). MUST NOT TO BE USED IN DIAGNOSTIC OR THERAPEUTIC APPLICATIONS.



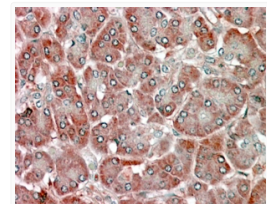
STJ70670 (2µg/ml) staining of NIH3T3 (A) and (0.5µg/ml) of U251 (B) cell lysate (35µg protein in RIPA buffer). Detected by chemiluminescence.



STJ70670 Immunofluorescence analysis of paraformaldehyde fixed U2OS cells, permeabilized with 0.15% Triton. Primary incubation 1hr (10µg/ml) followed by Alexa Fluor 488 secondary antibody (2µg/ml), showing cytoplasmic and nuclear staining. The nuclear stain is DAPI (blue). Negative control: Unimmunized goat IgG (10µg/ml) followed by Alexa Fluor 488 secondary antibody (2µg/ml).



STJ70670 Flow cytometric analysis of paraformaldehyde fixed HeLa cells (blue line), permeabilized with 0.5% Triton. Primary incubation overnight (10µg/ml) followed by Alexa Fluor 488 secondary antibody (1µg/ml). IgG control: Unimmunized goat IgG (10µg/ml) followed by Alexa Fluor 488 secondary antibody.



STJ70670 (5µg/ml) staining of paraffin embedded Human Pancreas. Steamed antigen retrieval with citrate buffer pH 6, AP-staining. This data is from a previous batch, not on sale.