

Anti-ACHE antibody (C-Term) (STJ70663)

GENERAL INFORMATION

Product Type	Primary antibodies
Applications	Pep-ELISA/WB/IF/FC
Host / Source	Goat
Reactivity	Human/Rat/Mouse

PRODUCT PROPERTIES

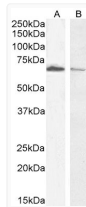
Clonality	Polyclonal
Concentration	0.5 mg/mL
Conjugation	Unconjugated
Purification	Purified from goat serum by ammonium sulphate precipitation followed by antigen affinity chromatography using the immunizing peptide.
Dilution Range	Peptide ELISA: antibody detection limit dilution 1:32000. WB: Approx 70kDa band observed in HepG2 and Jurkat cell lysates (calculated MW of 67.8kDa according to NP_000656.1). Recommended concentration: 0.3-1µg/ml. Primary incubation 1 hour at room temperature.
Formulation	0.5 mg/ml in Tris saline, 0.02% sodium azide, pH7.3 with 0.5% bovine serum albumin. NA
Isotype	IgG
Storage Instruction	Store at -20°C on receipt and minimise freeze-thaw cycles.

TARGET INFORMATION

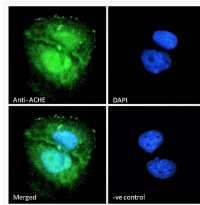
Gene ID	43
Gene Symbol	ACHE
UniProt ID	ACES_HUMAN
Immunogen Region	C-Term
Immunogen Sequence	QFDHYSKQDFRCSDL
Specificity	This antibody is expected to recognise isoform NP_000656.1 only (the ubiquitously expressed, hydrophilic form).

ADDITIONAL INFORMATION

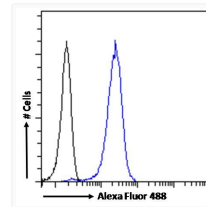
Note: STRICTLY FOR FURTHER SCIENTIFIC RESEARCH USE ONLY (RUO). MUST NOT TO BE USED IN DIAGNOSTIC OR THERAPEUTIC APPLICATIONS.



STJ70663 (0.3µg/ml) staining of Jurkat (A) and (0.5µg/ml) HepG2 (B) cell lysate (35µg protein in RIPA buffer). Detected by chemiluminescence.



STJ70663 Immunofluorescence analysis of paraformaldehyde fixed U2OS cells, permeabilized with 0.15% Triton. Primary incubation 1hr (10µg/ml) followed by Alexa Fluor 488 secondary antibody (2µg/ml), showing nuclear, membrane and cytoplasmic staining. The nuclear stain is DAPI (blue). Negative control: Unimmunized goat IgG (10µg/ml) followed by Alexa Fluor 488 secondary antibody (2µg/ml).



STJ70663 Flow cytometric analysis of paraformaldehyde fixed HeLa cells (blue line), permeabilized with 0.5% Triton. Primary incubation 1hr (10µg/ml) followed by Alexa Fluor 488 secondary antibody (1µg/ml). IgG control: Unimmunized goat IgG (black line) followed by Alexa Fluor 488 secondary antibody.