

Anti-AP-2 gamma antibody (C-Term) (STJ70661)

GENERAL INFORMATION

Product Type	Primary antibodies
Applications	Pep-ELISA/IHC
Host / Source	Goat
Reactivity	Human/Rat/Mouse/Dog/Pig/Cow

PRODUCT PROPERTIES

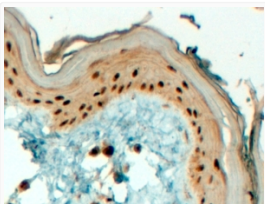
Clonality	Polyclonal
Concentration	0.5 mg/mL
Conjugation	Unconjugated
Purification	Purified from goat serum by ammonium sulphate precipitation followed by antigen affinity chromatography using the immunizing peptide.
Dilution Range	Peptide ELISA: antibody detection limit dilution 1:128000. WB: WB experiments gave bands at approx 75kDa and 22kDa in Human Placenta and Ovary lysates after 0.1µg/ml antibody staining. Please note that currently we cannot find an explanation in t
Formulation	0.5 mg/ml in Tris saline, 0.02% sodium azide, pH7.3 with 0.5% bovine serum albumin. NA
Isotype	IgG
Storage Instruction	Store at -20°C on receipt and minimise freeze-thaw cycles.

TARGET INFORMATION

Gene ID	7022
Gene Symbol	TFAP2C
UniProt ID	AP2C_HUMAN
Immunogen Region	C-Term
Immunogen Sequence	NKTLEKMEKHRK

ADDITIONAL INFORMATION

Note STRICTLY FOR FURTHER SCIENTIFIC RESEARCH USE ONLY (RUO). MUST NOT TO BE USED IN DIAGNOSTIC OR THERAPEUTIC APPLICATIONS.



STJ70661 (4µg/ml) staining of paraffin embedded Human Skin. Steamed antigen retrieval with Tris/EDTA buffer pH 9, HRP-staining.