

## Anti-COMT antibody (N-Term) (STJ70636)

### GENERAL INFORMATION

Product Type	Primary antibodies
Applications	Pep-ELISA/WB/FC
Host / Source	Goat
Reactivity	Human/Dog

### PRODUCT PROPERTIES

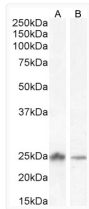
Clonality	Polyclonal
Concentration	0.5 mg/mL
Conjugation	Unconjugated
Purification	Purified from goat serum by ammonium sulphate precipitation followed by antigen affinity chromatography using the immunizing peptide.
Dilution Range	Peptide ELISA: antibody detection limit dilution 1:4000. WB: Approx 25kDa band observed in Human Liver and Ovary lysates and in MCF7 cell lysates, and approx. 25kDa and 30kDa in U251 cell lysate (calculated MW of 30.0kDa according to NP_000745.1)
Formulation	0.5 mg/ml in Tris saline, 0.02% sodium azide, pH7.3 with 0.5% bovine serum albumin. NA
Isotype	IgG
Storage Instruction	Store at -20°C on receipt and minimise freeze-thaw cycles.

### TARGET INFORMATION

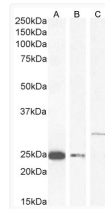
Gene ID	<a href="#">1312</a>
Gene Symbol	<a href="#">COMT</a>
UniProt ID	<a href="#">COMT_HUMAN</a>
Immunogen Region	N-Term
Immunogen Sequence	GDTKEQRILNHLQC
Specificity	This antibody is expected to recognise both reported isoforms S-COMT NP_009294.1 and MB-COMT NP_000745.1; NP_001128633.1; NP_001128634..

### ADDITIONAL INFORMATION

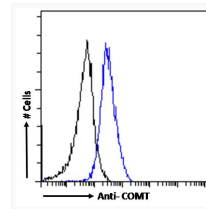
Note **STRICTLY FOR FURTHER SCIENTIFIC RESEARCH USE ONLY (RUO). MUST NOT TO BE USED IN DIAGNOSTIC OR THERAPEUTIC APPLICATIONS.**



STJ70636, (2ug/ml) staining of Human Liver (A) and (1ug/ml) Ovary (B) lysate (35µg protein in RIPA buffer) Detected by chemiluminescence.



STJ70636 (0.5ug/ml) staining of MCF7 (A), (1ug/ml) U251 cell lysate 1 (B) and U251 cell lysate 2 (C) (35µg protein in RIPA buffer) Detected by chemiluminescence.



STJ70636 Flow cytometric analysis of paraformaldehyde fixed A431 cells (blue line), permeabilized with 0.5% Triton. Primary incubation 1hr (10ug/ml) followed by Alexa Fluor 488 secondary antibody (1ug/ml). IgG control: Unimmunized goat IgG (black line) followed by Alexa Fluor 488 secondary antibody.