

Anti-Prostaglandin dehydrogenase 1 antibody (C-Term) (STJ70626)

GENERAL INFORMATION

Product Type	Primary antibodies
Applications	Pep-ELISA/WB/IHC
Host / Source	Goat
Reactivity	Human

PRODUCT PROPERTIES

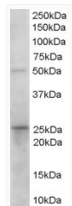
Clonality	Polyclonal
Concentration	0.5 mg/mL
Conjugation	Unconjugated
Purification	Purified from goat serum by ammonium sulphate precipitation followed by antigen affinity chromatography using the immunizing peptide.
Dilution Range	Peptide ELISA: antibody detection limit dilution 1:128000. WB: Experiments gave bands at approx 26kDa and 50kDa in Human Duodenum lysates after 0.1µg/ml antibody staining. These bands correspond to earlier findings in literature with different an
Formulation	0.5 mg/ml in Tris saline, 0.02% sodium azide, pH7.3 with 0.5% bovine serum albumin. NA
Isotype	IgG
Storage Instruction	Store at -20°C on receipt and minimise freeze-thaw cycles.

TARGET INFORMATION

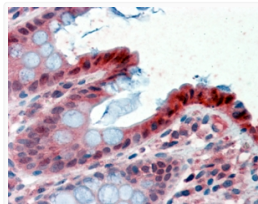
Gene ID	3248
Gene Symbol	HPGD
UniProt ID	PGDH_HUMAN
Immunogen Region	C-Term
Immunogen Sequence	DYDTTPFQAKTQ

ADDITIONAL INFORMATION

Note STRICTLY FOR FURTHER SCIENTIFIC RESEARCH USE ONLY (RUO). MUST NOT TO BE USED IN DIAGNOSTIC OR THERAPEUTIC APPLICATIONS.



STJ70626 (0.1 µg/ml) staining of Human Duodenum lysate (35 µg protein in RIPA buffer). Detected by chemiluminescence.



STJ70626 (2.5 µg/ml) staining of paraffin embedded Human Colon. Steamed antigen retrieval with citrate buffer pH 6, AP-staining.