

Anti-Swiprosin 1/EFHD2 antibody (C-Term) (STJ70621)

GENERAL INFORMATION

Product Type	Primary antibodies
Applications	Pep-ELISA/WB
Host / Source	Goat
Reactivity	Human/Mouse/Rat/Dog/Cow

PRODUCT PROPERTIES

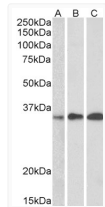
Clonality	Polyclonal
Concentration	0.5 mg/mL
Conjugation	Unconjugated
Purification	Purified from goat serum by ammonium sulphate precipitation followed by antigen affinity chromatography using the immunizing peptide.
Dilution Range	Peptide ELISA: antibody detection limit dilution 1:128000. WB: Approx 30kDa band observed in Human Thymus, Human Lymph node and Human Tonsil lysates (calculated MW of 26.7kDa according to NP_077305.2). Recommended concentration: 0.5-1.5µg/ml. Pri
Formulation	0.5 mg/ml in Tris saline, 0.02% sodium azide, pH7.3 with 0.5% bovine serum albumin. NA
Isotype	IgG
Storage Instruction	Store at -20°C on receipt and minimise freeze-thaw cycles.

TARGET INFORMATION

Gene ID	79180
Gene Symbol	EFHD2
UniProt ID	EFHD2_HUMAN
Immunogen Region	C-Term
Immunogen Sequence	CAAFKELQSTFK
Specificity	This antibody does not cross-react with Mouse Swiprosin 2. Data kindly provided by Sebastian Duetting and Dirk Mielenz.

ADDITIONAL INFORMATION

Note STRICTLY FOR FURTHER SCIENTIFIC RESEARCH USE ONLY (RUO). MUST NOT TO BE USED IN DIAGNOSTIC OR THERAPEUTIC APPLICATIONS.



STJ70621 (0.5µg/ml) staining of Human Thymus, Human Lymph node and Human Tonsil lysate (35µg protein in RIPA buffer). Detected by chemiluminescence.