

## Anti-RXR gamma antibody (Internal) (STJ70607)

### GENERAL INFORMATION

Product Type	Primary antibodies
Applications	Pep-ELISA/WB
Host / Source	Goat
Reactivity	Human/Mouse/Rat/Dog/Pig/Cow

### PRODUCT PROPERTIES

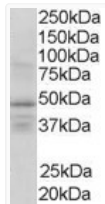
Clonality	Polyclonal
Concentration	0.5 mg/mL
Conjugation	Unconjugated
Purification	Purified from goat serum by ammonium sulphate precipitation followed by antigen affinity chromatography using the immunizing peptide.
Dilution Range	Peptide ELISA: antibody detection limit dilution 1:64000. WB: Approx 48kDa band observed in Human Brain lysates (calculated MW of 50.9kDa according to NP_008848). Recommended concentration: 1-3µg/ml. Primary incubation was 1 hour. Some bands of u
Formulation	0.5 mg/ml in Tris saline, 0.02% sodium azide, pH7.3 with 0.5% bovine serum albumin. NA
Isotype	IgG
Storage Instruction	Store at -20°C on receipt and minimise freeze-thaw cycles.

### TARGET INFORMATION

Gene ID	<a href="#">6258</a>
Gene Symbol	<a href="#">RXRG</a>
UniProt ID	<a href="#">RXRG_HUMAN</a>
Immunogen Region	Internal
Immunogen Sequence	RQRSRERAESEAEAC
Specificity	This antibody is expected to recognise an epitope corresponding to aa 213-226 of human RXR gamma protein (hinge region) and does not cross-react with either RXR alpha or beta.

### ADDITIONAL INFORMATION

Note STRICTLY FOR FURTHER SCIENTIFIC RESEARCH USE ONLY (RUO). MUST NOT TO BE USED IN DIAGNOSTIC OR THERAPEUTIC APPLICATIONS.



STJ70607 (1µg/ml) staining of Human Brain lysate (35µg protein in RIPA buffer). Detected by chemiluminescence.