

Anti-SLIMMER/FHL1 isoform B-Isoform b antibody (Internal) (STJ70599)

GENERAL INFORMATION

Product Type	Primary antibodies
Applications	Pep-ELISA/WB
Host / Source	Goat
Reactivity	Human/Mouse/Dog

PRODUCT PROPERTIES

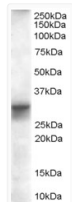
Clonality	Polyclonal
Concentration	0.5 mg/mL
Conjugation	Unconjugated
Purification	Purified from goat serum by ammonium sulphate precipitation followed by antigen affinity chromatography using the immunizing peptide.
Dilution Range	Peptide ELISA: antibody detection limit dilution 1:128000. WB: Approx 30kDa band observed in Human Heart lysates is consistent with literature (PMID:10480922; calculated MW of 36.3kDa according to AAC72886). Recommended concentration: 0.01-0.1µg/
Formulation	0.5 mg/ml in Tris saline, 0.02% sodium azide, pH7.3 with 0.5% bovine serum albumin. NA
Isotype	IgG
Storage Instruction	Store at -20°C on receipt and minimise freeze-thaw cycles.

TARGET INFORMATION

Gene ID	2273
Gene Symbol	FHL1
UniProt ID	FHL1_HUMAN
Immunogen Region	Internal
Immunogen Sequence	CTVSRVSHPVSKARK
Specificity	This antibody is specific for the FHL-1 isoform B (SLIMMER) and is expected to recognise an epitope corresponding to aa 233-246 of human SLIMMER protein.

ADDITIONAL INFORMATION

Note STRICTLY FOR FURTHER SCIENTIFIC RESEARCH USE ONLY (RUO). MUST NOT TO BE USED IN DIAGNOSTIC OR THERAPEUTIC APPLICATIONS.



STJ70599 (0.01µg/ml) staining of Human Heart lysate (35µg protein in RIPA buffer). Primary incubation was 1 hour. Detected by chemiluminescence.