

## Anti-FHL1/SLIM1 antibody (Internal) (STJ70598)

### GENERAL INFORMATION

Product Type	Primary antibodies
Applications	Pep-ELISA/WB/IF/FC
Host / Source	Goat
Reactivity	Human/Mouse/Rat/Cow

### PRODUCT PROPERTIES

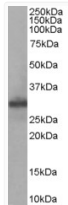
Clonality	Polyclonal
Concentration	0.5 mg/mL
Conjugation	Unconjugated
Purification	Purified from goat serum by ammonium sulphate precipitation followed by antigen affinity chromatography using the immunizing peptide.
Dilution Range	Peptide ELISA: antibody detection limit dilution 1:32000. WB: Approx 32kDa band observed in Human, Mouse and Rat Skeletal Muscle lysates and in Rat Lung and Testis lysates (calculated MW of 31.9kDa according to Mouse NP_001274729.1 and Rat NP_001
Formulation	0.5 mg/ml in Tris saline, 0.02% sodium azide, pH7.3 with 0.5% bovine serum albumin. NA
Isotype	IgG
Storage Instruction	Store at -20°C on receipt and minimise freeze-thaw cycles.

### TARGET INFORMATION

Gene ID	<a href="#">2273</a>
Gene Symbol	<a href="#">FHL1</a>
UniProt ID	<a href="#">FHL1_HUMAN</a>
Immunogen Region	Internal
Immunogen Sequence	CNKRFVFHNEQVY
Specificity	This antibody is expected to recognise isoforms 2 (NP_001440.1) and 5 (NP_001153171.1). Since June 2009 the second N residue in the immunizing peptide is no longer representative as it has been substituted by Q at position 284 of NP_001440.2. Variant

### ADDITIONAL INFORMATION

Note STRICTLY FOR FURTHER SCIENTIFIC RESEARCH USE ONLY (RUO). MUST NOT TO BE USED IN DIAGNOSTIC OR THERAPEUTIC APPLICATIONS.



STJ70598 staining (0.05 µg/ml) of Human Muscle lysate (RIPA buffer, 35 µg total protein per lane). Detected by chemiluminescence.