

## Anti-58KGolgi protein (Internal) /FTCD antibody (Internal) (STJ70578)

### GENERAL INFORMATION

|               |                         |
|---------------|-------------------------|
| Product Type  | Primary antibodies      |
| Applications  | Pep-ELISA/WB/IF/FC      |
| Host / Source | Goat                    |
| Reactivity    | Human/Mouse/Rat/Pig/Cow |

### PRODUCT PROPERTIES

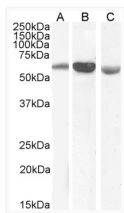
|                     |  |
|---------------------|--|
| Clonality           | Polyclonal   |
| Concentration       | 0.5 mg/mL  |
| Conjugation         | Unconjugated   |
| Purification        | Purified from goat serum by ammonium sulphate precipitation followed by antigen affinity chromatography using the immunizing peptide.  |
| Dilution Range      | Peptide ELISA: antibody detection limit dilution 1:64000.<br>WB: Approx 60kDa band observed in Human and Mouse Liver lysates and approx. 55-60kDa in Pig Liver lysates, and also in preliminary testing of Rat Liver and Human Kidney lysates (calculated) |
| Formulation         | 0.5 mg/ml in Tris saline, 0.02% sodium azide, pH7.3 with 0.5% bovine serum albumin. NA   |
| Isotype             | IgG  |
| Storage Instruction | Store at -20°C on receipt and minimise freeze-thaw cycles.   |

### TARGET INFORMATION

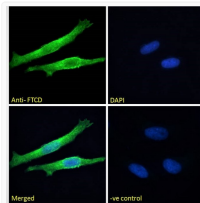
|                    |  |
|--------------------|--|
| Gene ID            | <a href="#">10841</a>  |
| Gene Symbol        | <a href="#">FTCD</a>   |
| UniProt ID         | <a href="#">FTCD_HUMAN</a>                                   |
| Immunogen Region   | Internal   |
| Immunogen Sequence | CLREQGGRGKDQPGRLL  |
| Specificity        | Variants (NP_006648.1; NP_996848.1) encode the same protein. |

### ADDITIONAL INFORMATION

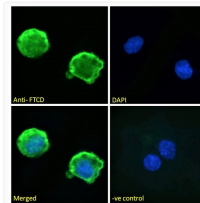
Note STRICTLY FOR FURTHER SCIENTIFIC RESEARCH USE ONLY (RUO). MUST NOT TO BE USED IN DIAGNOSTIC OR THERAPEUTIC APPLICATIONS.



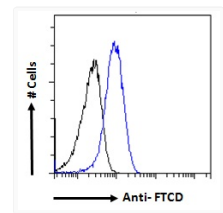
STJ70578 (0. 1µg/ml) staining of Human (A) of Mouse (B) and (0. 3µg/ml) of Pig (C) Liver lysate (35µg protein in RIPA buffer). Detected by chemiluminescence.



STJ70578 Immunofluorescence analysis of paraformaldehyde fixed HeLa cells, permeabilized with 0. 15% Triton. Primary incubation 1hr (10µg/ml) followed by Alexa Fluor 488 secondary antibody (2µg/ml) , showing plasma membrane and cytoplasmic staining. The nuclear stain is DAPI (blue). Negative control: Unimmunized goat IgG (10µg/ml) followed by Alexa Fluor 488 secondary antibody (2µg/ml)



STJ70578 Immunofluorescence analysis of paraformaldehyde fixed HepG2 cells, permeabilized with 0. 15% Triton. Primary incubation 1hr (10µg/ml) followed by Alexa Fluor 488 secondary antibody (2µg/ml) , showing membrane staining. The nuclear stain is DAPI (blue). Negative control: Unimmunized goat IgG (10µg/ml) followed by Alexa Fluor 488 secondary antibody (2µg/ml).



STJ70578 Flow cytometric analysis of paraformaldehyde fixed HepG2 cells (blue line) , permeabilized with 0. 5% Triton. Primary incubation 1hr (10µg/ml) followed by Alexa Fluor 488 secondary antibody (1µg/ml). IgG control: Unimmunized goat IgG (black line) followed by Alexa Fluor 488 secondary antibody.