

## Anti-FOXO3A/FOXO3/FKHRL1 antibody (C-Term) (STJ70559)

### GENERAL INFORMATION

Product Type	Primary antibodies
Applications	Pep-ELISA/WB/IHC
Host / Source	Goat
Reactivity	Human/Mouse/Rat/Dog/Pig/Cow

### PRODUCT PROPERTIES

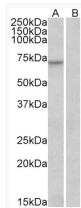
Clonality	Polyclonal
Concentration	0.5 mg/mL
Conjugation	Unconjugated
Purification	Purified from goat serum by ammonium sulphate precipitation followed by antigen affinity chromatography using the immunizing peptide.
Dilution Range	Peptide ELISA: antibody detection limit dilution 1:8000. WB: Approx 70kDa band observed in Human Heart lysates (calculated MW of 71.3kDa according to NP_001446.1). Recommended concentration: 0.1-1 µg/ml. Primary incubation was 1 hour. Preliminary
Formulation	0.5 mg/ml in Tris saline, 0.02% sodium azide, pH7.3 with 0.5% bovine serum albumin. NA
Isotype	IgG
Storage Instruction	Store at -20°C on receipt and minimise freeze-thaw cycles.

### TARGET INFORMATION

Gene ID	<a href="#">2309</a>
Gene Symbol	<a href="#">FOXO3</a>
UniProt ID	<a href="#">FOXO3_HUMAN</a>
Immunogen Region	C-Term
Immunogen Sequence	GAKQASSQSWVPG
Specificity	Both variants represent identical protein (NP_001446.1 and NP_963853.1).

### ADDITIONAL INFORMATION

Note STRICTLY FOR FURTHER SCIENTIFIC RESEARCH USE ONLY (RUO). MUST NOT TO BE USED IN DIAGNOSTIC OR THERAPEUTIC APPLICATIONS.



STJ70559 (0.3 µg/ml) staining of Human Heart lysate (35 µg protein in RIPA buffer) with (A) and without (B) blocking with the immunising peptide. Detected by chemiluminescence.