

Anti-CPEB1 antibody (C-Term) (STJ70558)

GENERAL INFORMATION

Product Type	Primary antibodies
Applications	Pep-ELISA/WB
Host / Source	Goat
Reactivity	Human

PRODUCT PROPERTIES

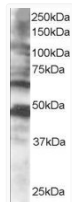
Clonality	Polyclonal
Concentration	0.5 mg/mL
Conjugation	Unconjugated
Purification	Purified from goat serum by ammonium sulphate precipitation followed by antigen affinity chromatography using the immunizing peptide.
Dilution Range	Peptide ELISA: antibody detection limit dilution 1:128000. WB: Approx 65-70kDa band observed in Human Brain lysates (predicted MW of 65kDa according to NP_085097). Recommended for use at 0.5-2µg/ml. Please note this band was always accompanied by
Formulation	0.5 mg/ml in Tris saline, 0.02% sodium azide, pH7.3 with 0.5% bovine serum albumin. NA
Isotype	IgG
Storage Instruction	Store at -20°C on receipt and minimise freeze-thaw cycles.

TARGET INFORMATION

Gene ID	64506
Gene Symbol	CPEB1
UniProt ID	CPEB1_HUMAN
Immunogen Region	C-Term
Immunogen Sequence	PLMRNQKNRDSS
Specificity	This antibody is expected to recognise alle reported isoforms. Variants (NP_001073002.1; NP_001073003.1) encode the same isoform.

ADDITIONAL INFORMATION

Note STRICTLY FOR FURTHER SCIENTIFIC RESEARCH USE ONLY (RUO). MUST NOT TO BE USED IN DIAGNOSTIC OR THERAPEUTIC APPLICATIONS.



STJ70558 staining (0.5 µg/ml) of human brain lysate (RIPA buffer, 35 µg total protein per lane). Primary incubated for 1 hour. Detected by chemiluminescence.