

Anti-ECSM2 antibody (C-Term) (STJ70551)

GENERAL INFORMATION

Product Type	Primary antibodies
Applications	Pep-ELISA/WB/IHC/IF
Host / Source	Goat
Reactivity	Human

PRODUCT PROPERTIES

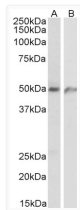
Clonality	Polyclonal
Concentration	0.5 mg/mL
Conjugation	Unconjugated
Purification	Purified from goat serum by ammonium sulphate precipitation followed by antigen affinity chromatography using the immunizing peptide.
Dilution Range	Peptide ELISA: antibody detection limit dilution 1:128000. WB: Approx 50kDa band observed in Human Lung and Human Umbilical Cord lysates (calculated MW of 21.3kDa according to NP_001071161.1). The observed molecular weight corresponds to earlier
Formulation	0.5 mg/ml in Tris saline, 0.02% sodium azide, pH7.3 with 0.5% bovine serum albumin. NA
Isotype	IgG
Storage Instruction	Store at -20°C on receipt and minimise freeze-thaw cycles.

TARGET INFORMATION

Immunogen Region	C-Term
Immunogen Sequence	NNGKQSLSAEKVL

ADDITIONAL INFORMATION

Note STRICTLY FOR FURTHER SCIENTIFIC RESEARCH USE ONLY (RUO). MUST NOT TO BE USED IN DIAGNOSTIC OR THERAPEUTIC APPLICATIONS.



STJ70551 (1µg/ml) staining of Human lung (A) and Human Umbilical Cord (B) lysates (35µg protein in RIPA buffer). Primary incubation was 1 hour.