

## Anti-Cdc42-binding kinase alpha antibody (N-Term) (STJ70546)

### GENERAL INFORMATION

Product Type	Primary antibodies
Applications	Pep-ELISA/IHC
Host / Source	Goat
Reactivity	Human/Mouse/Rat/Dog/Cow

### PRODUCT PROPERTIES

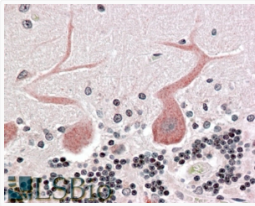
Clonality	Polyclonal
Concentration	0.5 mg/mL
Conjugation	Unconjugated
Purification	Purified from goat serum by ammonium sulphate precipitation followed by antigen affinity chromatography using the immunizing peptide.
Dilution Range	Peptide ELISA: antibody detection limit dilution 1:16000. IHC: Paraffin embedded Human Brain (Cerebellum) and Small Intestine (submucosal plexus). Recommended concentration: 3.75µg/ml.
Formulation	0.5 mg/ml in Tris saline, 0.02% sodium azide, pH7.3 with 0.5% bovine serum albumin. NA
Isotype	IgG
Storage Instruction	Store at -20°C on receipt and minimise freeze-thaw cycles.

### TARGET INFORMATION

Gene ID	<a href="#">8476</a>
Gene Symbol	<a href="#">CDC42BPA</a>
UniProt ID	<a href="#">MRCKA_HUMAN</a>
Immunogen Region	N-Term
Immunogen Sequence	SGEVLRQLQLEQFI
Specificity	This antibody is expected to recognise both reported Human isoforms (NP_055641.3 and NP_003598.2).

### ADDITIONAL INFORMATION

Note STRICTLY FOR FURTHER SCIENTIFIC RESEARCH USE ONLY (RUO). MUST NOT TO BE USED IN DIAGNOSTIC OR THERAPEUTIC APPLICATIONS.



STJ70546 (3.75µg/ml) staining of paraffin embedded Human Cerebellum. Steamed antigen retrieval with citrate buffer pH 6, AP-staining.