

## Anti-SM22 Alpha/Transgelin antibody (C-Term) (STJ70510)

### GENERAL INFORMATION

Product Type	Primary antibodies
Applications	Pep-ELISA/WB
Host / Source	Goat
Reactivity	Human/Mouse/Rat/Dog/Cow

### PRODUCT PROPERTIES

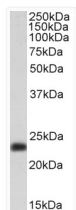
Clonality	Polyclonal
Concentration	0.5 mg/mL
Conjugation	Unconjugated
Purification	Purified from goat serum by ammonium sulphate precipitation followed by antigen affinity chromatography using the immunizing peptide.
Dilution Range	Peptide ELISA: antibody detection limit dilution 1:32000. WB: Approx 24kDa band observed in Human Skeletal Muscle and Testis lysates, and approx 25kDa in Mouse Skeletal Muscle lysates (calculated MW of 22.6kDa according to Human NP_003177.2 and M
Formulation	0.5 mg/ml in Tris saline, 0.02% sodium azide, pH7.3 with 0.5% bovine serum albumin. NA
Isotype	IgG
Storage Instruction	Store at -20°C on receipt and minimise freeze-thaw cycles.

### TARGET INFORMATION

Gene ID	<a href="#">6876</a>
Gene Symbol	<a href="#">TAGLN</a>
UniProt ID	<a href="#">TAGL_HUMAN</a>
Immunogen Region	C-Term
Immunogen Sequence	MTGYGRPRQIIS
Specificity	NP_003177.2 and NP_001001522.1 represent identical protein. The transgelin protein is found in fibroblasts and smooth muscle and is known as a transformation or shape change protein that is involved with actin cross-linking. Transgelin is one of the

### ADDITIONAL INFORMATION

Note STRICTLY FOR FURTHER SCIENTIFIC RESEARCH USE ONLY (RUO). MUST NOT TO BE USED IN DIAGNOSTIC OR THERAPEUTIC APPLICATIONS.



STJ70510 (0.3 µg/ml) staining of Human Testes lysate (35 µg protein in RIPA buffer). Detected by chemiluminescence.