

## Anti-SH3BP1 antibody (C-Term) (STJ70507)

### GENERAL INFORMATION

Product Type	Primary antibodies
Applications	Pep-ELISA/WB/IHC/ICC/IF
Host / Source	Goat
Reactivity	Human

### PRODUCT PROPERTIES

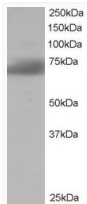
Clonality	Polyclonal
Concentration	0.5 mg/mL
Conjugation	Unconjugated
Purification	Purified from goat serum by ammonium sulphate precipitation followed by antigen affinity chromatography using the immunizing peptide.
Dilution Range	Peptide ELISA: antibody detection limit dilution 1:16000. WB: Approx 70kDa band observed in Human Lung and Kidney lysates (calculated MW of 75.7kDa according to NP_061830.3). Recommended for use at 1-3µg/ml. IHC: In paraffin embedded Human Ki
Formulation	0.5 mg/ml in Tris saline, 0.02% sodium azide, pH7.3 with 0.5% bovine serum albumin. NA
Isotype	IgG
Storage Instruction	Store at -20°C on receipt and minimise freeze-thaw cycles.

### TARGET INFORMATION

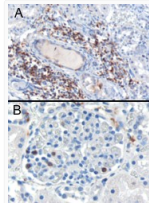
Gene ID	<a href="#">23616</a>
Gene Symbol	<a href="#">SH3BP1</a>
UniProt ID	<a href="#">3BP1_HUMAN</a>
Immunogen Region	C-Term
Immunogen Sequence	PQPRPRSLASETN

### ADDITIONAL INFORMATION

Note STRICTLY FOR FURTHER SCIENTIFIC RESEARCH USE ONLY (RUO). MUST NOT TO BE USED IN DIAGNOSTIC OR THERAPEUTIC APPLICATIONS.



STJ70507 staining (1µg/ml) of Human Brain lysate (RIPA buffer, 35µg total protein per lane). Primary incubated for 1 hour. Detected by chemiluminescence.



STJ70507 (0.3µg/ml) staining of paraffin embedded Human Kidney. Cytoplasmic staining of lymphocytes A) in the interstitial parenchyma of the kidney. B) in a glomerulus of the kidney. Microwaved antigen retrieval with citrate buffer pH 6, HRP-staining.