

Anti-Activin receptor-like kinase 1 antibody (C-Term) (STJ70505)

GENERAL INFORMATION

Product Type	Primary antibodies
Applications	Pep-ELISA/WB
Host / Source	Goat
Reactivity	Human

PRODUCT PROPERTIES

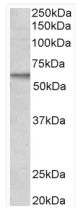
Clonality	Polyclonal
Concentration	0.5 mg/mL
Conjugation	Unconjugated
Purification	Purified from goat serum by ammonium sulphate precipitation followed by antigen affinity chromatography using the immunizing peptide.
Dilution Range	Peptide ELISA: antibody detection limit dilution 1:32000. WB: Approx 60kDa band observed in lysates of cell line MCF7 (calculated MW of 56.1kDa according to NP_000011.2). Recommended concentration: 1-3µg/ml.
Formulation	0.5 mg/ml in Tris saline, 0.02% sodium azide, pH7.3 with 0.5% bovine serum albumin. NA
Isotype	IgG
Storage Instruction	Store at -20°C on receipt and minimise freeze-thaw cycles.

TARGET INFORMATION

Gene ID	94
Gene Symbol	ACVRL1
UniProt ID	ACVL1_HUMAN
Immunogen Region	C-Term
Immunogen Sequence	KISNSPEKPKVIQ
Specificity	Please note that this product is not to be confused with the similarly named ALK (anaplastic lymphoma kinase, GeneID 238). Reported variant represent identical protein: NP_000011.2; NP_001070869.1

ADDITIONAL INFORMATION

Note STRICTLY FOR FURTHER SCIENTIFIC RESEARCH USE ONLY (RUO). MUST NOT TO BE USED IN DIAGNOSTIC OR THERAPEUTIC APPLICATIONS.



STJ70505 (2µg/ml) staining of MCF7 lysate (35µg protein in RIPA buffer). Primary incubation was 1 hour. Detected by chemiluminescence.