

Anti-VPS29 antibody (C-Term) (STJ70499)

GENERAL INFORMATION

Product Type	Primary antibodies
Applications	Pep-ELISA/WB
Host / Source	Goat
Reactivity	Human/Mouse/Rat/Dog/Cow

PRODUCT PROPERTIES

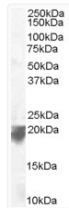
Clonality	Polyclonal
Concentration	0.5 mg/mL
Conjugation	Unconjugated
Purification	Purified from goat serum by ammonium sulphate precipitation followed by antigen affinity chromatography using the immunizing peptide.
Dilution Range	Peptide ELISA: antibody detection limit dilution 1:16000. WB: Approx 20+21kDa bands observed in Human Spleen lysates (calculated MW of 20.5kDa according to NP_057310.1 and 20.9kDa according to NP_476528.1). Recommended concentration: 0.1-0.3µg/ml
Formulation	0.5 mg/ml in Tris saline, 0.02% sodium azide, pH7.3 with 0.5% bovine serum albumin. NA
Isotype	IgG
Storage Instruction	Store at -20°C on receipt and minimise freeze-thaw cycles.

TARGET INFORMATION

Gene ID	51699
Gene Symbol	VPS29
UniProt ID	VPS29_HUMAN
Immunogen Region	C-Term
Immunogen Sequence	DDVKVERIEYKKP
Specificity	This antibody is expected to recognise both human isoforms (represented by NP_057310.1; NP_476528.1).

ADDITIONAL INFORMATION

Note STRICTLY FOR FURTHER SCIENTIFIC RESEARCH USE ONLY (RUO). MUST NOT TO BE USED IN DIAGNOSTIC OR THERAPEUTIC APPLICATIONS.



STJ70499 staining (0.1 µg/ml) of Human Spleen lysate (RIPA buffer, 35 µg total protein per lane). Detected by chemiluminescence.