

Anti-VPS26A antibody (C-Term) (STJ70498)

GENERAL INFORMATION

| | |
|---------------|-------------------------|
| Product Type | Primary antibodies |
| Applications | Pep-ELISA/WB |
| Host / Source | Goat |
| Reactivity | Human/Mouse/Rat/Pig/Cow |

PRODUCT PROPERTIES

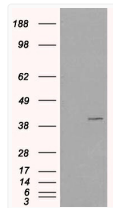
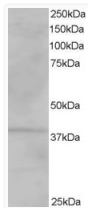
| | |
|---------------------|---|
| Clonality | Polyclonal |
| Concentration | 0.5 mg/mL |
| Conjugation | Unconjugated |
| Purification | Purified from goat serum by ammonium sulphate precipitation followed by antigen affinity chromatography using the immunizing peptide. |
| Dilution Range | Peptide ELISA: antibody detection limit dilution 1:4000. WB: Approx 40kDa band observed in Human Kidney lysates (calculated MW of 38.2 kDa according to NP_004887.2). In transfected HEK293 transiently expressing VPS26A a band of approx. 40kDa is observed. |
| Formulation | 0.5 mg/ml in Tris saline, 0.02% sodium azide, pH7.3 with 0.5% bovine serum albumin. NA |
| Isotype | IgG |
| Storage Instruction | Store at -20°C on receipt and minimise freeze-thaw cycles. |

TARGET INFORMATION

| | |
|--------------------|--|
| Gene ID | 9559 |
| Gene Symbol | VPS26A |
| UniProt ID | VP26A_HUMAN |
| Immunogen Region | C-Term |
| Immunogen Sequence | SPESQASAEQPEM |
| Specificity | This antibody is expected to recognize isoform 1 (NP_004887.2) only. |

ADDITIONAL INFORMATION

Note STRICTLY FOR FURTHER SCIENTIFIC RESEARCH USE ONLY (RUO). MUST NOT TO BE USED IN DIAGNOSTIC OR THERAPEUTIC APPLICATIONS.



STJ70498 staining (1µg/ml) of Human Kidney lysate (RIPA buffer, 35µg total protein per lane). Primary incubated for 1 hour. Detected by chemiluminescence.

HEK293 overexpressing VPS26A (RC205353) and probed with STJ70498 (mock transfection in first lane), tested by Origene.