

Anti-4E-T/EIF4ENIF1 antibody (C-Term) (STJ70487)

GENERAL INFORMATION

Product Type	Primary antibodies
Applications	Pep-ELISA/WB/IHC
Host / Source	Goat
Reactivity	Human/Mouse/Rat/Dog/Pig/Cow

PRODUCT PROPERTIES

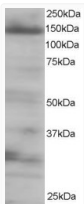
Clonality	Polyclonal
Concentration	0.5 mg/mL
Conjugation	Unconjugated
Purification	Purified from goat serum by ammonium sulphate precipitation followed by antigen affinity chromatography using the immunizing peptide.
Dilution Range	Peptide ELISA: antibody detection limit dilution 1:32000. WB: Approx 140-150kDa band observed in 293 lysates (predicted size of approx. 108kDa according to NP_062817.1, however our observation agrees with that of Dostie et al (see below)). Recom
Formulation	0.5 mg/ml in Tris saline, 0.02% sodium azide, pH7.3 with 0.5% bovine serum albumin. NA
Isotype	IgG
Storage Instruction	Store at -20°C on receipt and minimise freeze-thaw cycles.

TARGET INFORMATION

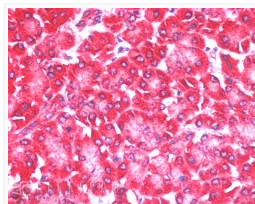
Gene ID	56478
Gene Symbol	EIF4ENIF1
UniProt ID	4ET_HUMAN
Immunogen Region	C-Term
Immunogen Sequence	AKVISVDELEYRQ
Specificity	This antibody is expected to recognise isoform 1 (NP_062817.2) and isoform b (NP_001157974.1). Reported variants represent identical protein (NP_062817.2; NP_001157973.1).

ADDITIONAL INFORMATION

Note **STRICTLY FOR FURTHER SCIENTIFIC RESEARCH USE ONLY (RUO). MUST NOT TO BE USED IN DIAGNOSTIC OR THERAPEUTIC APPLICATIONS.**



STJ70487 staining (0.25 µg/ml) of 293 lysate (RIPA buffer, 35 µg total protein per lane). Primary incubated for 1 hour. Detected by western blot using chemiluminescence.



STJ70487 (5 µg/ml) staining of paraffin embedded Human Pancreas. Steamed antigen retrieval with citrate buffer pH 6, AP-staining.