

Anti-CLIM1/PDLIM1 antibody (C-Term) (STJ70486)

GENERAL INFORMATION

Product Type	Primary antibodies
Applications	Pep-ELISA/WB/IHC
Host / Source	Goat
Reactivity	Human

PRODUCT PROPERTIES

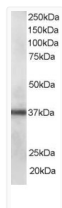
Clonality	Polyclonal
Concentration	0.5 mg/mL
Conjugation	Unconjugated
Purification	Purified from goat serum by ammonium sulphate precipitation followed by antigen affinity chromatography using the immunizing peptide.
Dilution Range	Peptide ELISA: antibody detection limit dilution 1:64000. WB: Approx 37kDa band observed in Human Lung lysate (calculated MW of 36.1kDa according to NP_066272.1). Recommended concentration: 0.1-0.3µg/ml. IHC: Paraffin embedded Human Placenta.
Formulation	0.5 mg/ml in Tris saline, 0.02% sodium azide, pH7.3 with 0.5% bovine serum albumin. NA
Isotype	IgG
Storage Instruction	Store at -20°C on receipt and minimise freeze-thaw cycles.

TARGET INFORMATION

Gene ID	9124
Gene Symbol	PDLIM1
UniProt ID	PDLI1_HUMAN
Immunogen Region	C-Term
Immunogen Sequence	TPPEGYEVVTVFPK

ADDITIONAL INFORMATION

Note STRICTLY FOR FURTHER SCIENTIFIC RESEARCH USE ONLY (RUO). MUST NOT TO BE USED IN DIAGNOSTIC OR THERAPEUTIC APPLICATIONS.



STJ70486 staining (0.1 µg/ml) of Human Lung lysate (RIPA buffer, 35 µg total protein per lane). Primary incubated for 1 hour. Detected by chemiluminescence.