

Anti-POLL/POLkappa antibody (C-Term) (STJ70479)

GENERAL INFORMATION

Product Type	Primary antibodies
Applications	Pep-ELISA/WB
Host / Source	Goat
Reactivity	Human

PRODUCT PROPERTIES

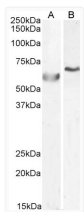
Clonality	Polyclonal
Concentration	0.5 mg/mL
Conjugation	Unconjugated
Purification	Purified from goat serum by ammonium sulphate precipitation followed by antigen affinity chromatography using the immunizing peptide.
Dilution Range	Peptide ELISA: antibody detection limit dilution 1:32000. WB: Approx 60kDa band observed in cell lysates of A549 and approx 60-70kDa in cell lysates of HepG2 (calculated MW of 63.5kDa according to Human NP_037406.1). Recommended concentration: 0.
Formulation	0.5 mg/ml in Tris saline, 0.02% sodium azide, pH7.3 with 0.5% bovine serum albumin. NA
Isotype	IgG
Storage Instruction	Store at -20°C on receipt and minimise freeze-thaw cycles.

TARGET INFORMATION

Gene ID	27343
Gene Symbol	POLL
UniProt ID	DPOLL_HUMAN
Immunogen Region	C-Term
Immunogen Sequence	LGLPYREPAERDW
Specificity	It has been brought to our attention that this product may crossreact with Pol beta (NP_002681), an evolutionarily related polymerase with a predicted size of 39 kDa. The overall % of identity is not very high (about 32% in the core) but considerin

ADDITIONAL INFORMATION

Note STRICTLY FOR FURTHER SCIENTIFIC RESEARCH USE ONLY (RUO). MUST NOT TO BE USED IN DIAGNOSTIC OR THERAPEUTIC APPLICATIONS.



STJ70479 (0.5 µg/ml) staining of A549 (A) and (1 µg/ul) HepG2 (B) cell lysate (35 µg protein in RIPA buffer). Primary incubation was 1 hour. Detected by chemiluminescence.